

# User Guide For M-48 SuperMask®



## Document P/N 100-800

Kirby Morgan, SuperLite, BandMask, Band Mask, KMB, KMB-Band Mask, DSI, Diving Systems International, EXO, REX, SuperFlow and DECA are all registered trademarks of Kirby Morgan Dive Systems, Inc. Use of these terms to describe products that are not manufactured by KMDSI is illegal.

The two dimensional images (such as photographs and illustrations) of our products are © copyrighted and trademarks of Kirby Morgan Dive Systems, Inc. The three dimensional forms of our products are trademark, trade design and trade dress protected.

© MMXXII Kirby Morgan Dive Systems, Inc. All rights reserved. This user guide is made available for the express use of owner of this Kirby Morgan product. No part of this user guide may be reproduced, stored in any retrieval system, or transmitted, or used in any form or by any means, whether graphic, electronic, mechanical, photocopy, or otherwise by technology known or unknown, without the prior written permission of Kirby Morgan Dive Systems, Inc. known or unknown, without the prior written permission of Kirby Morgan Dive Systems, Inc. known or unknown, without the prior written permission of Kirby Morgan Dive Systems, Inc.

---

# WARRANTY



## *USE ONLY KIRBY MORGAN® GENUINE PARTS*

Kirby Morgan Dive Systems Inc., (KMDSI) warrants every new helmet, BandMask®, Full Face Mask, SCUBA regulator or air control system (KMACS 5) (each, a Product) to be free from defects in workmanship for a period of three hundred sixty five (365) days from the date of purchase from a KMDSI authorized dealer. This warranty covers all metal, fiberglass, and plastic parts, but does NOT cover rubber parts, communications components, head cushions, chin cushions, or foam spacers.

Any defect of the product in workmanship or material covered by this warranty discovered within three hundred sixty five (365) days from the date of purchase must be promptly communicated in writing to the nearest authorized KMDSI dealer or (if no such dealer in the buyer's country) contact KMDSI directly at (805) 928-7772. No Product returns will be accepted by KMDSI without a returned merchandise authorization (RMA) number from KMDSI. Upon receipt of the RMA from KMDSI, the buyer should return the defective Product or part, freight prepaid, to an authorized KMDSI dealer or the KMDSI plant, as directed by the RMA department. KMDSI will repair or replace the Product at no charge, within a reasonable time, as it deems necessary.

### **THIS WARRANTY IS NULL AND VOID IF:**

- 1) The Product is not registered with KMDSI within ten (10) days of purchase, or
- 2) The Product has not been properly serviced and/or maintained by KMDSI factory trained/approved personnel, according to factory recommended procedures provided in the manual, along with the KMDSI Appendices Checklists, and/or Product updates have not been performed as recommended by KMDSI, or
- 3) Unauthorized attachments or modifications have been made to the Product, or
- 4) The Product has been used for purposes other than those for which it was designed, or otherwise has been abused, misused, or subjected to unusual conditions, or the Product's intended service has been exceeded.

**EXCEPT AS SPECIFICALLY PROVIDED HEREIN, THERE ARE NO OTHER WARRANTIES, EXPRESS OR IMPLIED, INCLUDING, BUT NOT LIMITED TO, ANY IMPLIED WARRANTIES FOR MERCHANTABILITY OR FITNESS FOR A PARTICULAR PURPOSE. THE HELMETS, BANDMASKS AND AIR CONTROL SYSTEMS COVERED BY THIS WARRANTY ARE MARKETED AND SOLD BY KMDSI SOLELY FOR COMMERCIAL OR INDUSTRIAL USE AND ARE NOT A CONSUMER PRODUCT INTENDED FOR PERSONAL, FAMILY, OR HOUSEHOLD USE.**

In purchasing any Product subject to this warranty, the buyer agrees that its sole and exclusive remedy and KMDSI's entire obligation in contract, tort, or otherwise under this contract will be repair or replacement at KMDSI's option of the Product or any parts which KMDSI determines during the applicable warranty period are defective in workmanship or material covered by this warranty. All exchanged parts are the property of KMDSI. The buyer's exclusive remedy and KMDSI's entire liability in contract, tort, or otherwise is the payment by KMDSI of the buyer's actual damages up to but not to exceed the amount paid by the buyer for the Product.

In no event shall KMDSI be liable to the buyer for indirect, special, incidental or consequential damages (including, but not limited to, damages for lost profits, lost sales, loss of business opportunity, or for injury to persons or property arising out of the use of the Products). Any claim or action for breach of warranty must be commenced within one year following delivery of the Product to the buyer.

Buyer acknowledges that this warranty is the sole and exclusive warranty of the Product and that it supersedes any and all oral or written representations and undertakings between KMDSI, its dealers, and the buyer relating to the Products. This warranty allocates the risks of product failure between KMDSI and the buyer, which allocation is recognized by both parties and is reflected in the price of the goods. The buyer acknowledges that they have read this agreement, understand it, and are bound by its terms.

**IMPORTANT:** Please register your purchase online at [www.kirbymorgan.com/support/product-registration-form](http://www.kirbymorgan.com/support/product-registration-form). If you have a problem with the online registration, please contact your Kirby Morgan dealer, or Kirby Morgan directly by calling (805) 928-7772, or email [sales@kirbymorgan.com](mailto:sales@kirbymorgan.com).

**Kirby Morgan® thanks you for your purchase.**

---

# Table Of Contents

<b>2</b>	<b>Warranty</b>
<b>6</b>	<b>Definitions of Signal Words and Terms Used in this Guide</b>
<b>7</b>	<b>Terms Used in this Guide</b>
<b>7</b>	<b>Introduction</b>
<b>10</b>	<b>CE Marking</b>
<b>11</b>	<b>Components of the M-48 SuperMask®</b>
<b>12</b>	<b>Depth Limit</b>
<b>12</b>	<b>Diving Modes</b>
<b>12</b>	Using the M-48 SuperMask® with Open Circuit SCUBA
<b>13</b>	Surface Supplied Open Circuit Diving Mode
<b>14</b>	Minimum Equipment for Surface Supplied Diving
<b>15</b>	Demand Regulator Adjustment / Surface Supplied
<b>16</b>	<b>Pre-Dive</b>
<b>16</b>	Mounting Open Circuit Regulators
<b>19</b>	Tools and Components Needed for Installation of Regulator to SCUBA Pod
<b>23</b>	Regulator Hose
<b>23</b>	Head Harness Removal and Installation
<b>23</b>	Strap Keepers
<b>23</b>	Removal of the Mask Strap
<b>24</b>	Installation of the Mask Strap on Mask Frame
<b>24</b>	Cleaning the Face Port and Interior Surfaces
<b>25</b>	Communications with the M-48 SuperMask®
<b>25</b>	Installing a Communications Port Plug
<b>25</b>	Dewatering and Tilt to Purge Valve Assemblies
<b>26</b>	PRE-DIVE with Open Circuit Regulator
<b>27</b>	PRE-Dive Inspection

---

## **27 Donning**

- 27 Donning the M-48 SuperMask®
- 28 Equalizing
- 29 Connecting the Pod to the Mask
- 31 Releasing the Pod from the Mask
- 31 Diving with a Hood
- 31 Water Entry
- 32 Removing the Mask
- 32 Removing/Replacing Pod while Underwater
- 32 Quick-Release Method of Mask Removal

## **34 Mask Clearing and Dewatering**

- 34 Mask Clearing with KMDSI Balanced SCUBA Regulator
- 35 Mask Clearing with Tilt to Purge Assembly
- 35 Dewatering Basics
- 35 Hands Free
- 35 Tilt to Purge

## **36 Post Dive Procedures/Checklist**

- 36 Post-Dive Cleaning and Inspection
- 37 Soft Pods and Mouthpiece Replacement Criteria
- 37 Cleaning Procedures
- 39 Germicidal Solutions Manufacturers
- 39 Conservation and Storage
- 40 Scheduled Maintenance
- 40 Disassembly Guidelines
- 41 Scheduled Maintenance

## **41 Adjustments and Minor Repairs**

- 41 Auto Purge Assembly
- 43 Tilt to Purge Valve P/N 805-047
- 44 Adjusting Tension on Pod Hook

## **44 Accessories/Spares**

- 44 Prescription Lenses
- 44 Inlet Swivel P/N 305-017

---

45	Manifold Block
45	Over-Pressure Relief Valve P/N 200-017
45	Communications Port Plug P/N 820-155
46	KMDSI Mouthpiece P/N 810-022L
46	SCUBA Pod Assembly with Balanced SCUBA Regulator P/N 200-130
46	Mask Bag P/N 800-905
48	<b>Appendix 1 PRE-Dive Inspection</b>
49	<b>Appendix 2 Post-Dive Cleaning and Inspection</b>
50	<b>Appendix 3 Scheduled Maintenance</b>
51	<b>Exploded View Drawing of the M-48 SuperMask® (No Pod)</b>
53	<b>Exploded View Drawing of the SCUBA Pod, P/N 805-015</b>
54	<b>Records</b>
54	<b>Notes</b>

# Definitions of Signal Words and Terms Used in this Guide

The original language of the Kirby Morgan Manuals is English. Translation into other languages will be provided upon request. KMDSI may charge a fee for these services.

Throughout this user guide we will use certain words to call your attention to conditions, practices or techniques that may directly affect your safety. Pay particular attention to information introduced by the following signal words:

## **DANGER**

**This word indicates an imminently hazardous situation, which if not avoided, could result in death or serious injury.**

## **WARNING**

**This word indicates a potentially hazardous situation, which, if not avoided, could result in death or serious injury.**

## **CAUTION**

**This word indicates a potentially hazardous situation, which if not avoided, may result in minor or moderate injury. It may also be used to alert against unsafe practices.**

## **NOTICE**

**This word is used to address practices not related to personal injury.**

This operation user guide contains important safety information and should always be available to those personnel operating this equipment. Read, understand, and retain all instructions before operating this equipment to prevent injury or equipment damage.

If you sell or loan this equipment to another person, be sure that this user guide accompanies the gear when you transfer possession to them.

# Terms Used in this Guide

**IAW:** In Accordance With

**BOV:** Bail Out Valve

**DSV:** Dive Surface Valve

**EGS:** Emergency Gas System

**Nose Dam:** Located on the inside of the mask, is an extended barrier that separates the upper (visual) portion of the mask from the lower (oral) part of the mask.

**PPE:** Personal Protective Equipment

**UBA:** Underwater Breathing Apparatus

## Introduction

Congratulations for choosing the Kirby Morgan® M-48 SuperMask®. The M-48 SuperMask® represents years of development and testing. Development of this mask could not have been possible without the help of the diving community as a whole.

The original goal was to develop a modular full face mask that could offer greater comfort and safety to divers using self-contained breathing apparatus.

The SuperMask® has been tested and certified by Dive Lab® Inc. Configuration in both open and closed circuit modes have been tested and approved for use by the U.S. Military. The mask, when used with CE approved components, conforms to the requirements of EN-250:2014

The two part modular full face mask is completely serviceable and manufactured with the finest materials using the highest quality control process. KMDSI will continue to develop the mask as well as additional pods and accessories. Users should routinely check [www.kirbymorgan.com](http://www.kirbymorgan.com) for additional information.

We welcome and encourage all input from our customers. Our goal is to provide the highest quality diving equipment and service possible. If you have any questions or comments, please feel free to contact us. Questions on the use and care of this mask should be addressed to Kirby Morgan Dive Systems Inc. Telephone 805-928-7772 or e-mail found at [www.kirbymorgan.com](http://www.kirbymorgan.com) or Dive Lab Inc., Telephone 850-235-2715; contact e-mail [divelab@divelab.com](mailto:divelab@divelab.com) found at [www.divelab.com](http://www.divelab.com).

## Introduction

---

The M-48 SuperMask® has been designed for use with open circuit SCUBA, closed, semi-closed circuit SCUBA, and demand mode surface supplied diving. Regardless of the diving mode, the mask must be configured for the type of system employed.

Because this mask system incorporates several unique design features not found in any other full face mask, it is recommended that persons with previous full face mask experience make at least one thirty minute indoctrination dive prior to open water diving and be completely familiar with this user guide. Newly trained divers and divers not experienced in full face mask diving should complete a training course in full face mask diving combined with a complete understanding of this user guide. Using the M-48 SuperMask® is very easy, but as with all new equipment, training and practice is the key to enjoyable diving.

At the surface or while underwater, the pod (lower part) can be effortlessly unfastened and resealed to allow:

- Clear communication to support personnel
- Superior gas conservation before the dive (by breathing ambient air)
- Alternate gas switching from any demand regulator or additional Kirby Morgan® pods
- Gas sharing and buddy breathing between divers

All of these actions are accomplished without removing the mask from the face and this ultimately reduces task loading and increases diver safety. It is as though the diver is simply removing their regulator from their mouth, the same as when diving with a traditional SCUBA mask and demand regulator. This makes using the M-48 SuperMask® instinctive to operate even in the most complex diving situations. However this said, the user must train with the equipment to gain experience in using the mask.



### NOTE

The exploded view for the 200-120 Balanced SCUBA regulator can be found in its separate user guide, P/N 100-141.



**⚠ WARNING**

**Cold Water Diving (water Temperatures below 50 °F 10 °C) requires specialized training and equipment. Do not attempt diving in cold water unless you are properly trained and equipped for this type of specialized diving. Attempting to dive cold waters without proper training & equipment can cause fatal accidents stemming from poor coordination, gear freeze-ups, hypothermia, etc.**

**⚠ DANGER****BIOHAZARD****CORROSIVE****RADIOACTIVE**

**Kirby Morgan Dive Systems, Inc., cannot guarantee the diver protection from contaminants when using the M-48 SuperMask® and MOD-1 in waters that are biologically, chemically or radioactively polluted. Radioactive, chemical, and biological contaminants can cause serious, permanent bodily harm or death to the user.**

**While the M-48 SuperMask® and MOD-1 can minimize and help reduce the risks associated with the exposure to certain waterborne chemical and biological contamination, it cannot protect the user in all situations or against all contaminants and KMDSI makes NO claim that the mask will protect the diver while diving in contaminated water.**

Diving this mask in water containing concentrations of petroleum based chemicals could cause degradation of the components of the mask. Clean the mask using only a solution of one tablespoon of mild hand dish washing soap, such as Joy or Palmolive, to one gallon of water.

## CE Marking

### ⚠ CAUTION

The minimum operating water temperature is 50 °F (10 °C). Second stage regulators may freeze and cause free flow condition.

### NOTICE

The Full Face Mask has been tested with air and CE certificates for use with air down to 165 fsw (50 msw). Compressed air must be compliant with the EN 12021. All the tables reporting the technical data and the pressure of use are relative to compressed air.

### CE Marking

On the right side of the mask frame the CE mark is printed.  
On the lens the data reported is the following:

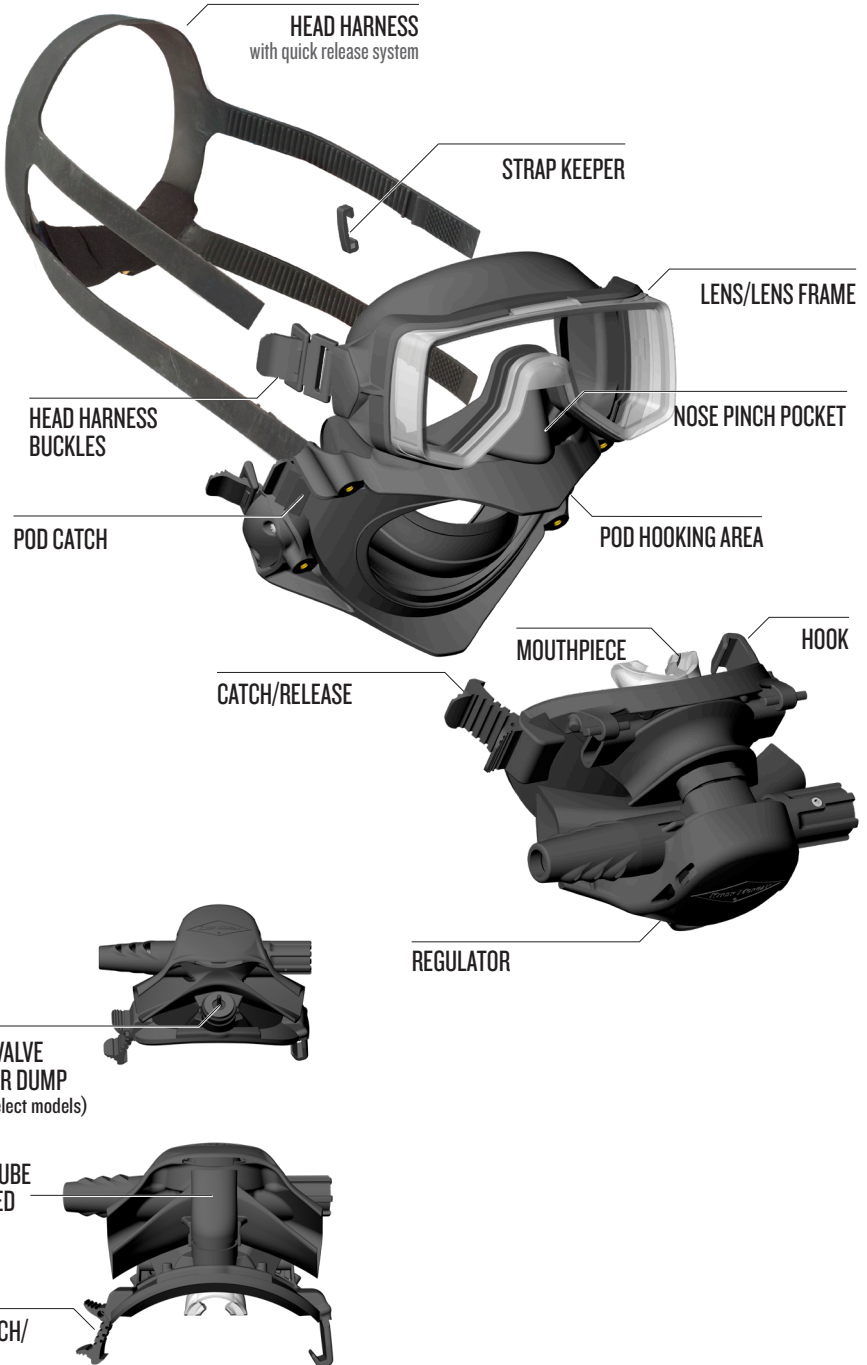
1. The name of the manufacturer

On the mask frame the data reported are the following

2. CE marking **CE**
3. The Full Face Mask Model (M-48 SuperMask®)
4. Harmonized reference standard EN250



# Components of the M-48 SuperMask®



## NOTICE

**The user cannot:**

- **remove the mark from the lens of the full face mask;**
- **modify or counterfeit the data reported on the mark.**

## NOTICE

**The mark must be visible and legible throughout the life of the PPE. If the mark deteriorates or is not legible the user should contact the manufacturer.**

## Depth Limit

The Depth limit for the M-48 MOD-1 P/N 805-175 and M-48 SuperMask® P/N 805-010 is limited only by the Underwater Breathing Apparatus (UBA) installed into the system.

When operating under CE guidelines, the maximum allowable recreational diving depth for the M-48 MOD-1 and SuperMask® with open circuit SCUBA is 130 FSW (39 MSW).

Lab testing at Dive Lab, Inc. to the EN 250 standard of 50 meters as well as additional testing beyond EN 250 limits, 100 m have completed successfully, but it is the UBA chosen that affirms the depth limit.

## Diving Modes

### Using the M-48 SuperMask® with Open Circuit SCUBA

For open circuit SCUBA, the M-48 SuperMask® is used in much the same way as a half mask and standard second stage regulator. If you have purchased the M-48 SuperMask® with a SCUBA pod, the Mouthpiece P/N 810-022L is included. Also note that if purchased with and mounted to the pod, is the new KMDSI Balance SCUBA second stage, the pod will be equipped with the automatic water purge system and NOT the tilt to purge valve assembly.

If your M-48 SuperMask® and SCUBA pod P/N 805-015 are not already equipped with a Kirby Morgan second stage regulator, it is important that the regulator to be installed use only the Kirby Morgan P/N 810-022L mouthpiece. The instructions for mounting open circuit demand regulators in this user guide must be read and understood before attempting to mount a second stage. When using this mask in countries that conform to CE standards the mask must only be used with components that have

been CE certified. The maximum recommended recreational diving depth for the M-48 SuperMask® with open circuit SCUBA is 130 FSW (39 msw) when operating under CE guidelines.

## **⚠ WARNING**

**If the mask is used for surface supplied diving, do not connect the umbilical directly to the M-48 SCUBA pod regulator. This can create a direct pull on the mask and pod and does not allow for use of a one-way valve and EGS supply. Always connect the umbilical to a one-way valve on a manifold block assembly, which then can be properly secured to the diving harness. KMDSI Manifold Block KMDSI P/N 300-145, 300-150, or 300-155 is appropriate for this purpose. Use of the manifold block requires surface supplied training.**

**Without the proper equipment for surface supply, the risks are many and can include: severe face squeeze, loss of mask, separation from air hose/umbilical, all of which can result in severe injury or death by drowning.**

The minimum temperature for using the Balanced SCUBA and M-48 SuperMask® with a surface supply umbilical and KMDSI manifold block is 32 °F (0.5 °C).

## **⚠ WARNING**

**When diving surface supply using a high pressure source, use only a high pressure source that has been filtered through a system that removes moisture down to at least -50 °F (-45 °C) to reduce the possibility of forming ice in the supply system. Ice has the potential to dangerously restrict or cut off a diver's air supply, resulting in serious injury or death.**

## **Surface Supplied Open Circuit Diving Mode**

The SuperMask® can be used for surface supplied diving when used with a surface supplied diving system.

When using the KMDSI SuperFlow® and Balanced SCUBA regulator second stage, the mask can be used to depths of 130 FSW (39 msw) when supplied with an air source capable of delivering at least 4.5 actual cubic feet of air per minute (acfm) (127 alpm) to the diver worn manifold assembly.

An ordinary scuba regulator first stage connected to a diving cylinder on the surface with a long hose to the mask is not an acceptable arrangement for this purpose, no matter what type of regulator is used.

The mask should only be used for surface supplied diving by divers trained and qualified in surface supplied techniques and procedures. A fully functional emergency gas supply system and body harness must always be used when diving the SuperMask® or any of the KMDSI full face masks models in the surface supplied mode.

The mask has not been CE approved for surface supplied diving and should not be used for surface supplied diving in countries conforming to CE standards

Users of the SuperMask® should practice donning, doffing, pod removal, and replacement procedures on the surface, in the dry. Once the basic maneuvers have been practiced and the user is comfortable, the user can move into a calm, shallow, controlled body of water (5-10 feet/1-3 meters in depth).

It is recommended that persons with previous full face mask experience make at least one thirty minute indoctrination dive prior to open-water diving. Newly trained divers and divers not experienced in full face mask diving must complete a training course in surface supplied diving. Using the SuperMask® is very easy, but as with all new equipment, training and practice is the key to enjoyable diving.

## **Minimum Equipment for Surface Supplied Diving**

The minimum equipment for surface supplied diving with this mask includes the following:



- Topside air supply (either low pressure compressor or high-pressure cylinders)
- Air control manifold
- Diver's Manifold Block with One Way Valve (Non-Return)
- Diver worn bail-out bottle with diving harness
- Bail-out regulator with over-pressure relief valve
- Umbilical with breathing gas supply hose, communications wire, and pneumofathometer hose
- Communications box
- M-48 SuperMask® equipped with communications

## **⚠ WARNING**

**The M-48 SuperMask® is NOT equipped with a one-way valve (non-return) for surface supplied diving. When using the mask for surface supplied diving it must be used with the KMDSI Manifold Block KMDSI P/N 300-145, 300-150, or 300-155, a suitable diving harness and emergency gas supply system. Without the one-way valve (non-return), the diver could be subject to a “squeeze” if the umbilical supply is severed. This can be fatal.**

### **Demand Regulator Adjustment / Surface Supplied**

When using the mask for surface supplied diving, the KMDSI Balanced SCUBA regulator will offer the best overall performance due to the broad adjustment range of the regulator bias adjustment and the ability to make adjustments for variations in supply pressure.

# Pre-Dive

## **⚠ WARNING**

**Not all SCUBA regulators/BOV'S/DSV's will fit the M-48 standard SCUBA pod. The size of the mouthpiece mounting tube as well as the placement and size of the exhaust tee can affect the mounting and proper functioning of the mouthpiece and folding action on the pod bellows.**

### Mounting Open Circuit Regulators



VIDEO



**How To Mount Open Circuit Regulators to a Kirby Morgan SCUBA pod**

<https://www.youtube.com/watch?v=cPXJ-VueVy0>

## **⚠ WARNING**

**Regarding Second Stages Used with M-48 SuperMask and M-48 MOD 1:**

**Testing conditions of the M-48 SuperMask® and MOD-1 masks using pilot assisted, or servo regulators, were found to exhibit higher levels of internal mask pressures when applying the purge button feature. These levels were above the allowable limit. This should be taken into consideration when choosing a second stage regulator for use with either mask.**

If your mask was not supplied with a KMDSI regulator installed by the factory, you will need to have an acceptable regulator installed in the SCUBA pod, P/N 805-015.

Prior to installation check to see if your regulator will work properly with the SCUBA pod, P/N 805-015 by referencing the images that follow and conforming to the following parameters:

1. The regulator mounting tube must have a single lip at the end that will be closest to the diver's mouth.
2. Demand regulator mouthpiece mount tubes should be at least a length of 0.5 inches/1.27 cm at the shortest measurement.



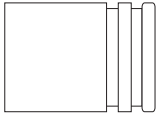
3. The KMDSI mouthpiece P/N 810-022L must fit snug completely around the mounting tube regardless of its shape.

The final test prior to installation should be that the KMDSI mouthpiece should remain on the mounting tube after a simple test of a slight pull when secured without a tie wrap.

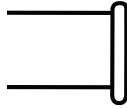
Do not stretch the pod mouthpiece opening greater than 50%.

Failure to use the correct type of demand regulator will result in flooding of the pod, which can lead to drowning. If in doubt do not install the regulator until first consulting with KMDSI or Dive Lab Inc.

Some manufacturers have specially shaped mouthpiece mounting tubes that have mating mouthpieces. These types of regulators cannot be used. There must be a retaining lip at the end of the mouthpiece mounting tube of your regulator in order to retain the mouthpiece. Use the included mouthpiece to check the mount tube compatibility.



This type **NOT**  
acceptable



This type **OK**



*The mouthpiece mount tube must have sufficient surface area to retain the mouthpiece to the tube.*

*Mouthpiece mounting tube (shown in magnified view).*

**The KMDSI mouthpiece and pod opening can be safely stretched to 50%.**

**Do not use regulators that have a mouthpiece tube that have a double lip at the end of the tube closest to your mouth, as illustrated at the above.**

**A pull test (see page 22) should be performed to confirm proper attachment of the regulator to the POD and mouthpiece.**

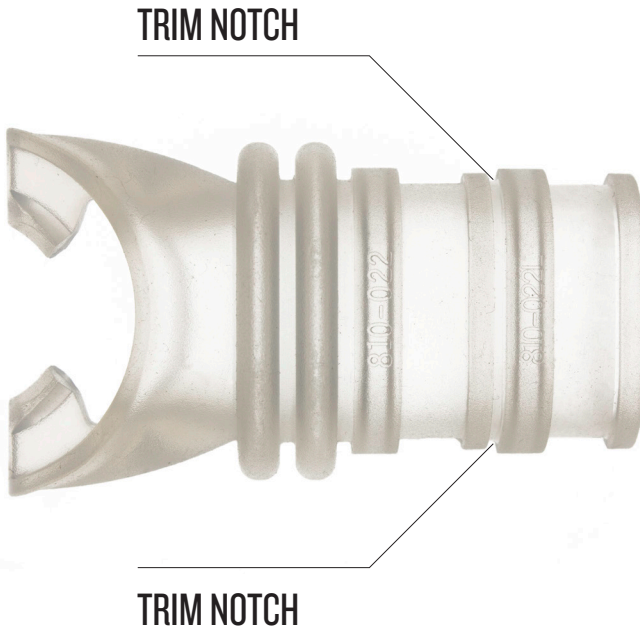
**⚠ WARNING**

**Not all second stage regulators can be properly mounted in the SCUBA pod. The size of the mouthpiece mounting tube and the placement and size of the exhaust tee can affect the mounting and proper functioning of the mouthpiece and folding action on the pod bellow. Use of a regulator that does not conform to the above stated requirements can result in drowning.**



**NOTE**

Some divers may find the mouthpiece as supplied, to be too long. It is possible to trim the mouthpiece to a shorter length. Using scissors carefully shorten the mouthpiece at the trim edge notch as illustrated in Figure 1.



*Figure 1 the M-48 mouthpiece*

**⚠ WARNING**

**Only the KMDSI mouthpiece P/N 810-022L will function correctly in your SCUBA pod. Do not attempt to use any other manufacturer's mouthpiece. Doing so could result in death by drowning**

**⚠ WARNING**

**Never dive the pod without a mouthpiece installed in the pod. A mouthpiece allows use of the pod even if the pod is not sealed to the mask. Buddy breathing cannot be readily accomplished without a mouthpiece installed. Use of the mask without the mouthpiece could result in death by drowning.**

**⚠ WARNING**

**Diving the M-48 SuperMask® without a mouthpiece will make dewatering the demand regulator/BOV/DSV more difficult. This could lead to death by drowning.**

**NOTICE**

**This procedure requires proper tools and a complete understanding of the installation procedure. Read the procedure carefully and entirely before attempting to install the regulator. If you are not confident you can perform this installation correctly, have the work performed by a trained technician at an authorized Kirby Morgan dealer.**

**Tools and Components Needed for  
Installation of Regulator to SCUBA Pod**

Needle Nose Pliers or Tie Wrap Gun Rated at 50 lbs./22.6 kg

Side Cutter Pliers

Pliers

Tie Wrap P/N 520-039 (rated for minimum 50 lb./22.6 kg pull)

1. Using the side cutters, cut and remove the tie wrap that secures the mouthpiece to your demand regulator/BOV/DSV.
2. Carefully inspect the regulator/BOV/DSV for sharp edges, and ensure the length and dimensions of the mouthpiece mount tube meet the requirements as shown previously. Test fit the KMDSI mouthpiece P/N 810-022 L to what is being mounted to be certain it will work as necessary.
3. Insert the KMDSI mouthpiece P/N 810-022L from inside the pod; into the opening so that the bite end extends into the cavity and the other end is flush with the pod opening.
4. Make certain that both the mouthpiece and regulator mount tube are

clean and free of ANY lubricants. Insert the demand regulator/BOV/DSV into the mouthpiece opening and fit so that the mouthpiece and pod opening are fully seated on the demand regulator/BOV/DSV. Be certain everything is properly aligned, (straight).



**Correct**



**INCORRECT**

*Insert the mouthpiece into the pod first.*



*The end of the mouthpiece must align evenly with the end of the mouthpiece tube on the pod.*

When the regulator/BOV/DSV is inserted into the pod, the mount tube of the regulator/BOV/DSV **must be inserted as far as it will go into the pod**. In addition, the regulator /BOV/DSV must be oriented correctly, i.e., right side up & free of lubricants too.



## **⚠ WARNING**

**Use only a KMDSI tie wrap P/N 520-039 rated for a minimum pull of 50 lbs. Use of a weaker tie wrap, or one that is “LOW PROFILE” could become loose and allow the regulator to pull out of the pod. This could lead to flooding of the pod and death by drowning.**



*Use only a KMDSI tie wrap with a minimum pull rating of 50 lbs./22.6 kg*

*Tighten the tie wrap properly using a tie wrap gun to achieve the correct tension. If a tie-wrap gun is not available, use needle nose pliers to tighten.*



5. Fit the tie wrap P/N 520-039 into position, ensure the joint of the tie wrap ends up in the center of the side of the mouth opening as shown pull tight as tight as possible by hand or use a tie wrap installation

tool. Cut off excess tie wrap material flush with the joint lock of the tie wrap. There should be no sharp edges.

6. Pull the mouthpiece and the demand regulator/BOV/DSV in opposite directions with enough force to ensure that they are both securely mounted to the pod.
7. If the mouthpiece or demand regulator/BOV/DSV pulls off the pod, even partially, it must be remounted!

It is recommended that any time a user is in doubt as to the integrity of the “component to pod” fit in question, a simple pull test be performed by the end user or installer. Attach a 25 lb./11.3 kg weight or a filled 50 cu. ft aluminum SCUBA tank to the demand regulator/BOV/DSV using string or tie wraps in the manner shown on this page. Suspend the weight for 3–5 seconds from the pod with the pod mounted on a stable device, if available and allowing the full weight to pull on the demand regulator/BOV/DSV.



*If there is any doubt regarding the mounting of the regulator, perform a pull test as illustrated here, by using a 25 lb./11.3 kg weight, maximum.*

## **⚠ WARNING**

**After assembling, ensure the demand regulator/BOV/DSV functions properly without interference to or from any part of the pod or mask. If in doubt, do not use until first consulting with KMDSI or Dive Lab Inc. Signs of improper function, if ignored, may lead to compromised air delivery which could lead to accidents that can cause injury or death.**

## Regulator Hose

The supply hose that attaches the 1st and 2nd stage regulators together should be of sufficient length to allow full movement of the head when the pod is secured to the mask. Ensure the hose is secured to the demand regulator inlet and the 1st stage, when testing for the correct length. A special swivel attachment P/N 305-017 (included) may be attached to the demand regulator or BOV. This swivel allows a better fairlead of the intermediate hose and less restriction in head movement.

### CAUTION

**Do not dive with a low pressure regulator hose connected to the regulator/BOV that is too short. Using a hose that is too short will put unnecessary stress on pod and regulator/BOV, resulting in restricted head movement and could increase difficulty of sealing the pod to the mask. These factors can decrease the comfort of the diver which could lead to an accident and injury.**

## Head Harness Removal and Installation

The standard SuperMask® mask strap is a four point semi-stretch head harness with a quick release buckle, P/N 805-031.

The head harness has four straps branching out from a circular junction that terminates into a quick release buckle. The female end has a neoprene sleeve for diver's comfort while the male end is uncovered. Each strap leg has many buckle adjustment "teeth". Keep in mind that these teeth should be against the divers head before being threaded into the buckle assembly and the smooth surface should face outward.

## Strap Keepers

Each of the four straps has a strap keeper. The strap keeper is secured in a groove found at the end of the strap before the tapered end. The strap keeper should be installed on the strap, with the small gap in the keeper, oriented with the smooth side of the strap. The mask strap cannot be removed from the mask without removing the strap keeper. Installing the strap keeper should be done after the strap has been threaded through the buckle assembly.

## Removal of the Mask Strap

The strap keepers must be removed first. Note the position of the strap keepers in relation to the mask strap before removing. We recommend replacing the strap keeper back onto the strap groove once it has been



pulled through the buckle assembly and clear of the mask. This will lower the chance of losing the strap keeper and ensure correct orientation into the strap groove. Remember to remove the keepers before attempting to reinstall the straps onto the mask. Lift up on the tab found at the edge of the buckle assembly while simultaneously pulling the strap leg until it is completely fed through the assembly and clear of the mask. Repeat process for the remaining three straps.

## **Installation of the Mask Strap on Mask Frame**

Orient the mask strap so that the circular junction of the mask strap will be positioned at the back of the diver's head, with the smooth side of the harness facing out and the ribs on the strap legs against the head. Begin with one of the top straps and feed the strap through the adjustment buckle by lifting up on the tab of the buckle assembly. The strap keeper groove will appear after the tapered leading edge followed by the resistance ribs. The resistance ribs will face the head or hood and the smooth side faces away from the head or hood. This will provide correct threading through the assembly. Reinstall the strap keeper into strap groove. Repeat process for the remaining three straps.



**NOTE**

The strap keepers prevent the straps from coming free from the buckles and must be in place prior to diving.

## **Cleaning the Face Port and Interior Surfaces**

The M-48 SuperMask® frame and pod components are made of high impact plastic. The flexible face seal and pod skirts are molded of high grade injection molded liquid silicone.

Ensure that the viewing lenses are clear and clean. Fogging can be eliminated or reduced by thoroughly cleaning the interior of the lens and applying a good quality anti-fog solution. Follow the manufacturer's recommendations for use.

If commercial anti-fog solution is unavailable, ½ a drop per lens of liquid dish washing soap or liquid hand soap can be used. Apply the small dab, smearing a thin film on the inside of the lens and let dry. Follow with a light buff with a soft cloth allowing a slight residue of soap film to remain on the face port to inhibit fogging.



## Communications with the M-48 SuperMask®



VIDEO



How to install Communications in your M-48 MOD-1 / SuperMask® | Full Face Mask | 815-060

<https://www.youtube.com/watch?v=9jff52OIHa8>

Communications are available for the M-48 SuperMask®; either hard wire or wireless. The communications mounting instructions will vary, depending on what type of system you purchase.



To mount a microphone into the mask, follow the manufacturer's recommended mounting instructions. In almost all cases, you will need to open up one of the communications ports, which are located below the bottom edge of the mask frame. Secure using tie wrap, KMDSI P/N 520-038.

### Installing a Communications Port Plug

If the mask has a communications system installed, but you wish to use it without, remove the communications system from the mask. You will now need to plug the communications port. Install the communication port plug as shown, curved side towards the diver's face.



### Dewatering and Tilt to Purge Valve Assemblies

It is important to always clean and flush the purge tube, balanced or tilt to purge valve assembly after every dive; followed by an inspection for damage, tears or deterioration of assembly.

## Inspection

Regardless if your pod is fitted with a tilt to purge valve or with a purge tube, balanced there are two main points of inspection:

- The tie wrap securing the water dump body to the pod.
- The water dump valve body with valve and its fit into the recess inside the pod skirt.

## Outside of the pod

Visually inspect the tie wrap for signs of failure then use your hand to apply slight pressure to the assembly to guarantee it is secured to the pod.

If your pod is outfitted with a tilt to purge valve assembly move the stem in all directions to ensure the spring is working and that the stem returns to its original position.

## Inside of the pod

Begin by visually confirming that the water dump valve body is seating correctly in the lower recess of the pod skirt.

Follow up by moving the tip of your finger around the leading edge of the Water Dump Valve Body to verify uniform seating into the pod skirt.

### CAUTION

**Prior to diving, a complete inspection of the mask and all related gear should be made in accordance with the pre-dive set up procedures and pre dive checklists to ensure that everything is in proper working order. Users should become familiar with all components and functions of the mask as well as all support equipment used before donning the mask. Failure to inspect the mask prior to diving or being unfamiliar with the gear may lead to an accident resulting in injury or death.**

## PRE-DIVE with Open Circuit Regulator

Use “PRE-Dive Inspection”, in this user guide or print one out from [www.kirbymorgan.com/support/checklists](http://www.kirbymorgan.com/support/checklists) to ensure that a methodical inspection of the M-48 SuperMask® and all related gear is completed before each

dive. This will ensure all components are in proper working order prior to water entry.

## PRE-Dive Inspection

Diver Name: \_\_\_\_\_ Date: \_\_\_\_\_

NO.	STEP	INIT.
1.	Visually inspect exterior and interior of mask and pod for any type of obvious damage. Both should be free of debris, cuts, nicks, and deterioration.	
2.	If using a BOV/DSV on the pod, test IAW manufacturer's instructions. Ensure the BOV/DSV and mouthpiece are secure in the pod. If using a demand regulator and/or separate pod for secondary gas supply, inspect IAW the manufacturer's recommendations and ensure the regulator and mouthpiece are secure in the pod.	
3.	Inspect the mask and pod sealing surfaces and ensure they are in good condition with no cracks, tears, debris, or punctures.	
4.	Carefully inspect head harness for signs of cracking or tearing. Head harness adjustment buckles should be checked for damage and tested for proper function. Ensure each strap has a keeper.	
5.	Visually inspect viewing lenses. They should be clean and clear. A good practice is to <b>APPLY ANTI-FOG SOLUTION PRIOR TO USE.</b>	
	Inspect following pod components: <input type="checkbox"/> Hook <input type="checkbox"/> Regulator <input type="checkbox"/> BOV <input type="checkbox"/> DSV <input type="checkbox"/> Catch/Release Dewater/Purge Valve <input type="checkbox"/> Mouthpiece is Secure <input type="checkbox"/> Nose Pinch Assembly	
6.	Pod Catch Release requires routine inspection before and after each dive to ensure part is in optimum working condition. When attaching pod assembly to the mask, pod catch release should make a snapping sound while engaging each ratchet tooth on mask catch. No sound or physical contact while engaging ratchet teeth on mask catch indicates material fatigue, damage or obstruction. Under such circumstances, pod catch release/hook must adjusted or replaced prior to dive.	
7.	Check the mouthpiece of the regulator/BOV/DSV to ensure correct installation, function, and secure fit. (covered in #2)	
8.	Check accessory mounting bracket and installed components (if applicable) for secure fit.	
9.	If installed. Check for proper installation of communication system and/or communication port plug.	
10.	Conduct a surface fit check of mask, harness and buckle assembly prior to diving. Confirm that the skirt is not folded under itself and sits properly on the face.	

## Donning

### Donning the M-48 SuperMask®

Although you can don the mask as one complete unit, most of the time, you will probably find that it is more convenient to don the mask in two steps, i.e., don the mask and pod separately. If you are using scuba gear, this will allow you to conserve air on the surface until the exact moment when you are entering the water.

1. Snap shut the quick-release head harness buckle and then loosen the four head harness straps all the way by lightly pushing out on the buckle tabs and pulling back on the individual straps.



2. Hold the SuperMask® so that it is hanging from the head harness.
3. Place the SuperMask® on your head in a face down position. Arrange the head harness so that the strap is on top of your head and the quick-release is against the back of the head and neck. Pull the mask down over the face and position the chin into the lower section.



4. Lightly tighten the top head harness straps first, positioning the mask as necessary for a comfortable fit on the face.

5. Lightly tighten the lower head harness straps. Do not over tighten. The mask should fit snug, but should be comfortable.



## Equalizing

The nose cavity of the SuperMask® is used as the method for equalizing. Because the actual nose pocket of the mask is very flexible, it allows the pocket to be moved slightly in towards the face and can also be flexed side to side to get the best possible function for equalizing.

**⚠ WARNING**

It is highly recommended that all donning, doffing, pod removal, and replacement procedures be practiced on the surface in a dry environment, regularly and often, before attempting the same procedures in the water. Lack of familiarity with these procedures, should they become necessary while in the water, can lead to an accident, resulting in severe injury or death.

**Connecting the Pod to the Mask**

Only when you are ready to enter the water is it necessary to fasten the pod to the mask frame. Whether you are using a demand regulator/BOV or DSV it is essential to practice donning and removing the pod on and off the mask before you enter the water.



1. Engage the hook on the pod onto the left side of the mask frame, just above the Jaw Strap.

2. Swing the pod to the right so that the mating surface on the pod frame properly engages the mating surface on the mask frame.





3. Snap the pod catch, release, located on the pod, to the right side of the mask by positioning your thumb on the back of the pod catch (found on the mask) and forefinger on the pod catch, release. Squeeze the two parts together. Ensure that the pod is snapped onto the second tooth of the pod catch. A click will be heard during the mating procedure.

The pod Catch, Release MUST click and remain on the second and final position on the pod catch (on the mask) to be in dive mode.

4. Insert the mouthpiece and clear the demand regulator or BOV by both closing your mouth and pushing the purge button or by forcefully exhaling into the mouthpiece. If using a DSV exhaling into the mouthpiece to clear the regulator is your only option.
5. Dewater pod - To dewater the pod refer to “Dewatering Basics” on page 35

### **Alternate Method for connecting the Pod**

1. Place the mouthpiece in your mouth first. Clear the regulator or BOV by both closing your mouth and pushing the purge button or by forcefully exhaling into the mouthpiece. If using a DSV exhaling into the mouthpiece to clear the regulator is your only option.
2. With the mouthpiece in your mouth, slide the pod to the left to properly align the hook onto the mask frame.
3. Using the thumb and forefinger, snap the pod catch, release closed by pinching the front part of the pod catch, release and the back part of the pod catch together. Ensure that the pod is snapped onto the second tooth of the pod Catch (two clicks) and in the dive mode position.
4. Dewater pod - To dewater the pod refer to “Dewatering Basics” on page 35.

With either method, you may use your fingers and the palm of your hand to snap the pod Catch, Release closed by pinching the front part of the Catch, Release and the back part of the pod Catch (mask) together.

---

## Releasing the Pod from the Mask



Squeeze the front and the back parts of the pod Catch, Release together to release the pod from the mask. Swing the pod forward and to the left in an arcing motion to free the pod Hook from the mask. Make sure the pod Hook is completely disengaged from mask. Once you have established that the pod is free of the mask suggested handling is by holding the LP supply hose to move the pod to desired location for gas sharing, storage or transport.

## Diving with a Hood

A general rule of placing the mask skirt closest to the face with the wet-suit hood over the mask skirt should be typical. Latex dryhoods found on certain drysuits are thin enough to be worn either close to the face with the mask skirt on top of the hood or with the mask skirt close to the face in the configuration when using a neoprene hood.

Kirby Morgan has designed a unique attached hood made specifically for this mask. It gives the optimum positioning and sealing onto the mask and comes in standard and large sizes.

## Water Entry

Many methods of water entry are possible due to the secure nature of the mask seal. However, the diver should hold the mask & demand regulator/BOV/DSV firmly against the face when doing a roll off or drop type entry. Once in the water, the diver should recheck mask fit, check the regulator for ease of breathing, and perform a communications check if so equipped.



## Removing the Mask

The mask can be removed by pushing outward on the SuperMask while at the same time gently pushing out on the two lower head harness adjustment buckles allowing the mask to slide forward.



### Quick-Release Method of Mask Removal

Squeeze the latch tabs together on the quick-release buckle to remove the mask from your head.

It is also possible to push outward on both the Temple and Jaw strap buckle in a controlled manner, then proceed to push the entire mask away from the face.

## Removing/Replacing Pod while Underwater

Users of the M-48 SuperMask® should practice donning, doffing, pod removal, and replacement procedures on the surface, in the dry first. An excellent way to practice this is while sitting in front of a mirror. This will allow you to see exactly how things should align to obtain proper attachment. As you progress with the technique, start attempting this with your eyes closed. Doing this for several minutes will train you as to the natural movements needed to attach the pod. It will become second nature with practice.

Once the basic maneuvers have been practiced and the user is comfortable, for the initial use of the M-48 SuperMask® it is recommended the user move into a calm, shallow, controlled body of water (5-10 feet, 1.5-3 meters, in depth) to repeat the donning and doffing drills that were practiced in the dry.



## ⚠ WARNING

It is important to periodically practice clearing the pod and mask in open water. When carrying out these drills it is imperative you train with all of the gear, which you normally dive with. Failure to properly train to use this equipment can lead to serious injuries or death.

### Releasing the Pod from the Mask While Underwater

First, the regulator adjustment knob should be turned in, or detuned. Squeeze the front and the back parts of the pod Catch, Release together to release the pod from the mask. Swing the pod forward and to the left in an arcing motion to free the pod Hook from the mask.



Once the right side of the pod is free, swing the pod to the left allowing it to completely unhinge from the mask.

When removing the pod while using a demand regulator or BOV the

mouthpiece should be rotated downward to minimize the chance of free flowing. If the demand regulator is equipped with a bias adjustment or a venturi spoiler, the regulator should be desensitized and a free hand should also be at the ready to block the mouthpiece opening to stop a possible free flow caused by the venturi effect.

If switching from one pod or alternate air source to another, the pod or air source should be located and ready to use, prior to unhinging the pod to allow for rapid switching. Once the pod is completely free of the mask, another pod can be reattached or the user can use a standard open circuit SCUBA regulator.



### NOTE

Normal breathing can occur with the M-48 SuperMask® without sealing the pod frame to the mask as long as the diver has the mouthpiece in their mouth and it is clear of water. With the mouthpiece secured and demand regulator/BOV/DSV cleared, the system will act in the same manner as a traditional mask and second stage when SCUBA diving.

## **⚠ WARNING**

**Never dive the pod without a mouthpiece installed. A mouthpiece allows use of the pod even if the pod is not sealed to the mask, or if the mask strap fails. Having a bite on the mouthpiece will help maintain a good seal to the mask.**

**Also, buddy breathing cannot be readily accomplished without a mouthpiece installed. The chances of an accident due to a compromised air supply increase greatly without the mouthpiece. This can lead to serious injury or death of the diver and/or the diver's partner.**

## **Mask Clearing and Dewatering**

### **Mask Clearing with KMDSI Balanced SCUBA Regulator**

To clear water from the Upper (eye) section, one should understand the path to exit. The water will be forced from the Upper (eye) section to the Lower (oral) cavity and out the dewatering/purge valve at the base of the pod frame.

When using a KMDSI Balanced SCUBA Regulator with the SuperMask® it is simply a matter of attaining a face forward position, with the mouthpiece in your mouth, and exhaling through your nose while using one hand to lift the bottom of the lens frame away from the face. Be sure to begin exhala-

tions through the nose **before** lifting the bottom of the mask frame and to **continue exhaling until** the frame returns to the face.

The face forward position, increasing pressure (from exhaling) and purge assembly on the pod all work together to drain the water from both cavities of the mask. When air bubbles are seen escaping from the dewatering/purge valve, the pod has been cleared.

#### Review: Mask Clearing

1. Exhale through the nose (with mouthpiece in your mouth) or mouth closed.
2. In a face forward position lift bottom of lens frame away from face

## **Mask Clearing with Tilt to Purge Assembly**

If using a pod fitted with the Tilt to Purge assembly this process is accomplished in the same manner as mentioned above, but will also require another hand to activate the tilt to purge valve. Pressing on the Valve Stem in any direction will activate the valve. When air bubbles are seen escaping from the dewatering/purge valve, the mask has been cleared.

## **Dewatering Basics**

The same concept of clearing the mask applies to dewatering the pod. Increased pressure, by exhaling through the nose, is the force that pushes water through the water dump/ purge valve to clear the pod. When air bubbles are seen escaping from the valve, the mask has been cleared.

## **Hands Free**

When using the SuperMask<sup>®</sup> with the KMDSI Balanced SCUBA Regulator, dewatering the lower cavity is an effortless process that is hands free. The purge tube, located at the base of the pod Frame, houses a dewater/one-way valve. This valve keeps water out and with an increase of cavity pressure, by exhaling through the nose with the mouthpiece in your mouth or mouth closed, it allows water to be forced out of the lower section of the pod. Additional methods for dewater are also possible. Such as activating the purge on the regulator and having the mouth closed and mouthpiece out of the mouth.

## **Tilt to Purge**

When using a pod with a demand regulator other than the KMDSI Balanced SCUBA Regulator your hand will be required to activate the tilt to purge found at the base of the pod frame.

## Post Dive Procedures/Checklist

---

1. With the mouthpiece in your mouth begin exhaling through the nose.
2. While exhaling push on the tilt purge stem in any direction to activate the valve.
3. Repeat process until water is completely out of the pod.

### Review: Dewatering pod

1. Exhale through the nose (with mouth closed or the mouthpiece in your mouth).
2. If pod is equipped with tilt to purge activate valve while exhaling.

The lower cavity should be clear of water within two to three exhalations from the nose.

Remember...When air bubbles are seen or heard escaping out of the valve, that is indicating water has been purged from the pod.

## Post Dive Procedures/Checklist

Completely inspect the SuperMask<sup>®</sup>, soft pod and all related gear after each dive in accordance with the checklist in the following “Post-Dive Cleaning and Inspection” to ensure that all components are in proper working order.



### NOTE

For the following procedures, the SuperMask<sup>®</sup> should already be completely disconnected from the breathing system.

## Post-Dive Cleaning and Inspection

---

Diver Name: \_\_\_\_\_ Date: \_\_\_\_\_

---

NO.	STEP	INIT.
1.	Remove pod from mask.	
2.	Soapy Solution Wash: Prepare solution of warm water (80-100 °F) and mild hand type dish-washing soap. Agitate components in solution for 2-3 minutes; use soft bristle brush or cleaning rag. Allow mask to soak for 10 minutes then rinse thoroughly with clean fresh water.	
3.	Ensure all debris such as sand and dirt is removed from regulator mouthpiece and BOV/DSV inhalation and exhalation ports. Clean the regulator; BOV or DSV IAW manufacturer's instructions. Thoroughly rinse the tilt-to-purge valve.	
4.	Rotate Regulator Adjustment Knob fully out (counter clockwise), if equipped.	
5.	Gently blow dry mask and pod with clean, oil-free low pressure air (less than 30 psig, or 1.8 bar) or hang and let air dry completely. Allow mask to dry completely before storage. Avoid direct sunlight. To avoid spotting, dry view ports with a clean, lint free cloth.	
6.	Inspect mask for damaged, worn, or missing parts.	
7.	Dry and store mask and pod out of sunlight and fluorescent light, preferably in protective bag or pouch.	

**⚠ CAUTION**

**When not in use, component inlet/outlet ports shall be protected with clean, dry dust caps. Without this precaution, contaminants and/or debris may enter the breathing system causing improper function.**

**Soft Pods and Mouthpiece Replacement Criteria**

Prior to any dive visually inspect for any damage. Ensure all debris is cleared from pod before conducting inspection. The pod and/or mouthpiece should be replaced under the following conditions:

Visual inspection of both exterior and interior of pod reveals cuts, nicks, or general deterioration that could affect, fit, form or function. pod cover is cracked, torn, or punctured.

Connecting parts, such as pod catch, release or pod hook are not securely mounted or are damaged or worn, as described below:

pod catch, release does not make snapping sound while engaging the second and final ratchet tooth on pod Catch.

No sound or physical contact while engaging first ratchet tooth on mask hook (indicative of material fatigue).

Visual inspection of mouthpiece reveals cracks, tears, or general deterioration.

**REMEMBER:** If any area of the pod, lenses, mask or mask strap fails, your MOUTHPIECE could be your LIFELINE! Make certain it is properly installed and in good condition.

**Cleaning Procedures**

After each day of diving, or between use by different users, the mask, and pod, should be carefully cleaned and visually inspected. Cleaning should be accomplished using a mild hand type dish washing soap and cleaning rag.

Mix the soap and water approximately one tablespoon per gallon of water. Wet all components of the mask and agitate using a cleaning rag. Keep the soap solution in contact with the mask surfaces for at least three to five minutes then thoroughly rinse with clean fresh water and dry. Clean and sanitize the demand regulator/BOV/DSV in accordance with the manufacturer's recommendations.

The mask should be transported and stored, completely dried, in the stor-

age bag with the pod removed to keep the frame from taking a set. Follow the manufacturer's recommendations on periodic maintenance of your demand regulator/BOV/DSV.

If the mask is equipped with communications, refer to the manufacturer's post-dive procedures for proper corrective maintenance and care.

**⚠ CAUTION**

**Clean and sanitize this mask using only the procedure described in this user's guide. Never use cleaning solvents or petroleum-based chemicals on this mask.**

During a standard overhaul, parts should be cleaned in a warm water and mild soap solution, with a clean rag, and thoroughly rinsed in clean water. Hand dishwashing soap like Joy®, Dawn® or Palmolive® can be used.

With a solution of approximately one tablespoon of mild dish soap per gallon of warm water, a cleaning time of ten to fifteen minutes (parts submerged with some agitation with cleaning rag) is sufficient. Extended time should be avoided. A nylon toothbrush and/or tube brush can be used to remove corrosion. After cleaning, rinse all parts thoroughly with fresh water and allow drying. Always inspect the general condition of the pod and the components for any damage or wear before reassembling.

**⚠ WARNING**

**Always sanitize all diving components an individual will be exposed to prior to use by another person. Failure to do so could result in the transmission of communicable diseases, some of which may cause long term disability or death.**

**⚠ CAUTION**

**Carefully dilute germicidal cleansing solutions in accordance with manufacturers' recommendation. If solution is not of the recommended strength, it will not act as an effective disinfectant.**

**⚠ CAUTION**

**Failure to thoroughly rinse germicidal cleansing solution from the diving equipment may result in lung irritation and/or long-term degradation of rubber and silicone components.**

Sanitizing of the mask and pod is accomplished using one of the approved germicidal cleansing solutions listed in the following “Germicidal Solutions Manufacturers”. Follow the manufacturer’s mixing instructions and procedures. It is important to thoroughly rinse with fresh water.

General guidelines are as follows: Wet or immerse all components to be sanitized. Allow to stay in contact with solution for at least ten minutes while lightly scrubbing over components with nylon toothbrush or clean cloth to help remove mucous or saliva build up. If germicidal solution appears to be drying, apply more solution to keep components wet for full ten minutes. After ten minutes, thoroughly rinse components under fresh (potable) running water while brushing or rubbing components.

If equipment is not being used immediately, allow components to air dry or pat dry with clean towel and reassemble.

## **Germicidal Solutions Manufacturers**

1. **SaniZide Plus: P/N:** 34805 (spray) or 34810 (gallon), Ready to use; do not dilute. 1-800-456-7077 <http://safetec.com/products/>
2. **MSA Confidence Plus:** P/N 10009971 (32 ounces) Mix one ounce of concentrate with one gallon of fresh water.
3. **Steramine™:** Steramine Quaternary Sanitizing Tablets - 150 Sanitizer Tablets per bottle 1 Tablet per gallon of water - Makes 150 gallons of cleaning solution <http://steramine.com/>

## **Conservation and Storage**

Ensure the mask and pod is thoroughly dry before storing. DO NOT STORE with the pod attached to the mask. It is best for long term storage not to have the pod attached to the mask.

Store the mask and pod at room temperature and out of direct sunlight.

## **WARNING**

**When purchasing spare parts, always insist on Kirby Morgan Genuine Parts. Although other parts may look the same, they may not be manufactured to the same standards of quality. Improperly manufactured parts can cause accidents that can lead to injury or death.**

### **Scheduled Maintenance**

This user guide provides properly trained personnel with the guidance and technical information needed to perform normal scheduled maintenance and adjustments as described herein. Repairs and overhauls must be completed by M-48 SuperMask® authorized trained technicians.



**NOTE**

Read and understand each section before attempting the procedures found in the tables found in the user guide. Refer to the accompanying figures for location of callouts included in these maintenance steps. Also refer to the parts information included in “Exploded View Drawing of the M-48 SuperMask® (No Pod)” on page 51.



**NOTE**

Before scheduled maintenance is performed, all components should be thoroughly cleaned in accordance with the procedures found in “Cleaning Procedures” on page 37.

### **Disassembly Guidelines**

Routine cleaning and maintenance is the best way to ensure long equipment life and optimum performance. The following outlines scheduled maintenance procedures for the M-48 SuperMask®.



## Scheduled Maintenance

ACTION	FREQUENCY	REFERENCE
1. Pre-Dive Inspection	Before Each Use	"PRE-Dive Inspection" on page 27
2. Post-Dive Procedures	After Each Use	"Post-Dive Cleaning and Inspection" on page 36
3. Inspection Of Pod Dewatering/Purge Valve Assembly	Daily	
4. Inspection of Pod Catch/Release and Pod Hook	Daily	
5. Replace tie wraps	At Least Every 12 Months, Inspect Daily	
6. Inspect mouthpiece	Daily	
7. Inspect head harness, buckle assemblies and strap keepers	Daily	
8. Inspect Nose clearing device	Daily	

### NOTICE

Store spare valves, and soft goods in a cool, dark, dry place. Avoid prolonged exposure to temperatures above 90 °F (32 °C) and/or exposure to ultraviolet rays or chemical fumes

## Adjustments and Minor Repairs

### Auto Purge Assembly



#### NOTE

**This assembly is ONLY used with the Kirby Morgan Balanced SCUBA regulator.**

1. Cut tie wrap, and remove purge sleeve and purge tube as one unit. Separate the two and set aside for inspection and reassembly.
2. Push on the outside of the pod skirt to unseat the water dump valve body and valve. The two components will be removed as one unit inside the pod skirt. Do not attempt to push the valve body through the pod tube.
3. Clean all components using a soft bristle brush and cleaning solution.
4. Inspect components for damage. Replace if needed.

5. Install the water dump valve body and valve back into the pod skirt as one unit. Verify correct orientation of the valve and seating into skirt tube.



Valve orientation allows breathing gas and water to exit the pod when installed correctly.

**NOTE**



6. Insert purge sleeve into purge tube, as shown (insert photo). Make certain the direction of the sleeve is correct and that it is pushed all the way into the purge tube.

7. Insert these two parts together into the tube of the pod skirt until they are against the exhaust valve and water dump valve body. Proper fit will show no signs of bulging or displacement on the tube with alignment of the tube pointing upwards.



**Step 8 cannot be completed until the Kirby Morgan Balanced SCUBA Regulator is installed into the pod. See “Mounting Open Circuit Regulators” on page 16.**

**NOTE**



8. Using tie wrap tool or equivalent, install new tie wrap to secure Purge Tube in place on pod skirt.

### Tilt to Purge Valve P/N 805-047

1. Cut tie wrap, and remove tilt-to-purge valve assembly.
2. Push on the outside of the pod skirt to unseat the water dump valve body and valve. The two components will be removed as one unit inside the pod skirt. Do not attempt to push the valve body out through the tube of the pod skirt.
3. Clean using a soft bristle brush and cleaning solution on the exterior surfaces of assembly. Place in ultrasonic cleaner using cleaning solution for 10 minutes. Re-clean with soft bristle brush if needed.
4. Inspect component for damage. Replace if needed.
5. Install the water dump valve body and valve back into the pod skirt as one unit. Verify correct orientation of the valve and seating into skirt tube.



#### NOTE

Valve orientation allows breathing gas and water to exit the pod when installed correctly.

6. Install tilt-to-purge valve assembly so that the assembly is flush with tube end on rubber skirt of pod.
7. Using tie wrap tool or equivalent, install new tie wrap P/N 520-038 to secure tilt-to- purge valve assembly in place on pod skirt.

## Adjusting Tension on Pod Hook



Over a period of time it might be necessary to increase the tension on the pod hook found on the left hand side of the pod due to material fatigue. If two clicks are not audible when connecting the pod to the mask, it is time to service the pod hook.

Begin by exposing the mounting screws by using your finger to gently and slightly peel back a portion of the pod silicone skirt on the left side to expose the three screws holding the hook to the pod frame. The hook has four possible settings and arrives from our factory positioned at the optimal setting.

If adjustment is needed remove the three screws and washers from inside the pod frame and remove the pod hook cover found on the outside of the assembly. With the hook accessible move the hook one slot closer to the front of the pod (away from the mouth). Once it is secured into the new slot reinstall the pod hook cover followed by the three screws to finalize adjustment.

## Accessories/Spares

### Prescription Lenses

The following website is available to install prescription lenses onto your M-48 mask:

[prescriptiondivemasks.com](http://prescriptiondivemasks.com)

### Inlet Swivel P/N 305-017

The high flow swivel allows the regulator hose to move freely and align with the mask without putting stress on the hose coupling. It uses standard SCUBA threads for incoming breathing air.





## Manifold Block

The M-48 SuperMask® SCUBA pod can be used with surface supplied umbilical systems by using a manifold block system. The diver must be properly trained and equipped for surface supplied diving. A manifold block with a one way valve (non-return) that is securely fastened to a harness and bailout system must always be used when diving surface supplied.

The M-48 SuperMask® is not equipped with a one-way valve (non-return) which is essential for surface supplied diving. This Manifold Block provides this essential system component. The Manifold Block Assembly shown comes in three configurations, P/N 300-150 with 9/16" Oxygen fitting, P/N 300-155 with #6 JIC fitting or P/N 300-145 with standard SCUBA fitting. It is equipped with an Emergency Gas Supply valve, four low pressure outlets and a one-way valve (non-return).



## Communications Port Plug P/N 820-155

If communications have been removed, the Communications Port Plug allows the mask to be used without communications.

## Over-Pressure Relief Valve P/N 200-017

This valve is designed to be mounted on a first stage bail-out regulator for surface-supplied diving. It allows pressure to bleed from the intermediate pressure hose in the event of a "creeping" first stage. Without this valve, the intermediate pressure hose would burst and the diver would lose his entire emergency gas supply. (Torque specification for installing into low pressure port of first stage regulator: 20 inch pounds).





## Mask Bag P/N 800-905

A convenient Mask Bag is available for storage and transportation of the mask, Pod, and regulators.

## KMDSI Mouthpiece P/N 810-022L

This is the mouthpiece that comes in the pod when equipped with Kirby Morgan's Balanced SCUBA regulator. If you need a replacement, or just a spare on hand, ask for mouthpiece P/N 810-022L.



## SCUBA Pod Assembly with Balanced SCUBA Regulator P/N 200-130

This SCUBA pod includes the latest and most advanced SCUBA regulator in our product line, the Balanced SCUBA regulator. The flexible shroud, gives the diver a wider activation area over traditional purge button systems.

This shroud also incorporates a wide exhaust body that aids in lowering the exhalation effort and deflects exhaust bubbles away from the diver's field of vision.

The SCUBA pod with the Balanced SCUBA regulator comes standard with a balanced water purge tube which, unlike the tilt to purge system, enables the diver to clear and dewater the pod hands free.

When using P/N 200-130 as spare regulator, divers using the SuperMask<sup>®</sup>/MOD-1 modular full face mask will have the benefit of securing their back up, bailout or decompression gas directly to the mask with the continued benefits of the modular full face mask.

*This page intentionally left blank*

# Appendix 1 PRE-Dive Inspection

Diver Name: \_\_\_\_\_ Date: \_\_\_\_\_

NO.	STEP	INIT.
1.	Visually inspect exterior and interior of mask and pod for any type of obvious damage. Both should be free of debris, cuts, nicks, and deterioration.	
2.	If using a BOV/DSV on the pod, test IAW manufacturer's instructions. Ensure the BOV/DSV and mouthpiece are secure in the pod. If using a demand regulator and/or separate pod for secondary gas supply, inspect IAW the manufacturer's recommendations and ensure the regulator and mouthpiece are secure in the pod.	
3.	Inspect the mask and pod sealing surfaces and ensure they are in good condition with no cracks, tears, debris, or punctures.	
4.	Carefully inspect head harness for signs of cracking or tearing. Head harness adjustment buckles should be checked for damage and tested for proper function. Ensure each strap has a keeper.	
5.	Visually inspect viewing lenses. They should be clean and clear. A good practice is to <b>APPLY ANTI-FOG SOLUTION PRIOR TO USE</b> .	
	Inspect following pod components: <input type="checkbox"/> Hook <input type="checkbox"/> Regulator <input type="checkbox"/> BOV <input type="checkbox"/> DSV <input type="checkbox"/> Catch/Release Dewater/Purge Valve <input type="checkbox"/> Mouthpiece is Secure <input type="checkbox"/> Nose Pinch Assembly	
6.	Pod Catch Release requires routine inspection before and after each dive to ensure part is in optimum working condition. When attaching pod assembly to the mask, pod catch release should make a snapping sound while engaging each ratchet tooth on mask catch. No sound or physical contact while engaging ratchet teeth on mask catch indicates material fatigue, damage or obstruction. Under such circumstances, <u>pod catch release/hook must adjusted or replaced prior to dive</u> .	
7.	Check the mouthpiece of the regulator/BOV/DSV to ensure correct installation, function, and secure fit. (covered in #2)	
8.	Check accessory mounting bracket and installed components (if applicable) for secure fit.	
9.	If installed. Check for proper installation of communication system and/or communication port plug,	
10.	Conduct a surface fit check of mask, harness and buckle assembly prior to diving. Confirm that the skirt is not folded under itself and sits properly on the face.	



# Appendix 2 Post-Dive Cleaning and Inspection

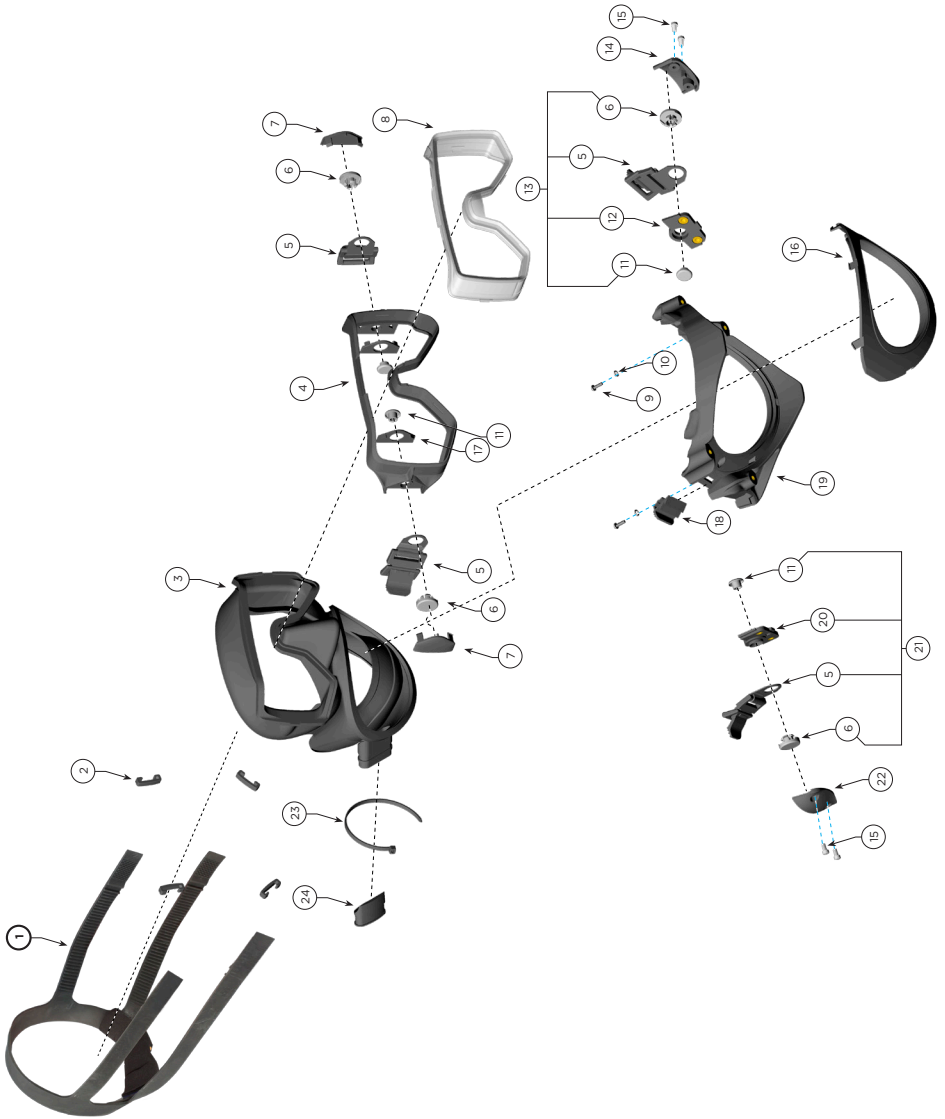
Diver Name: \_\_\_\_\_ Date: \_\_\_\_\_

NO.	STEP	INIT.
1.	Remove pod from mask.	
2.	Soapy Solution Wash: Prepare solution of warm water (80-100 °F) and mild hand type dish-washing soap. Agitate components in solution for 2-3 minutes; use soft bristle brush or cleaning rag. Allow mask to soak for 10 minutes then rinse thoroughly with clean fresh water.	
3.	Ensure all debris such as sand and dirt is removed from regulator mouthpiece and BOV/DSV inhalation and exhalation ports. Clean the regulator; BOV or DSV IAW manufacturer's instructions. Thoroughly rinse the tilt-to-purge valve.	
4.	Rotate Regulator Adjustment Knob fully out (counter clockwise), if equipped.	
5.	Gently blow dry mask and pod with clean, oil-free low pressure air (less than 30 psig, or 1.8 bar) or hang and let air dry completely. Allow mask to dry completely before storage. Avoid direct sunlight. To avoid spotting, dry view ports with a clean, lint free cloth.	
6.	Inspect mask for damaged, worn, or missing parts.	
7.	Dry and store mask and pod out of sunlight and fluorescent light, preferably in protective bag or pouch.	

# Appendix 3 Scheduled Maintenance

ACTION	FREQUENCY	REFERENCE
1. Pre-Dive Inspection	Before Each Use	"PRE-Dive Inspection" on page 27
2. Post-Dive Procedures	After Each Use	"Post-Dive Cleaning and Inspection" on page 36
3. Inspection Of Pod Dewatering/Purge Valve Assembly	Daily	
4. Inspection of Pod Catch/Release and Pod Hook	Daily	
5. Replace tie wraps	At Least Every 12 Months, Inspect Daily	
6. Inspect mouthpiece	<u>Daily</u>	
7. Inspect head harness, buckle assemblies and strap keepers	Daily	
8. Inspect Nose clearing device	Daily	

# Exploded View Drawing of the M-48 SuperMask® (No Pod)



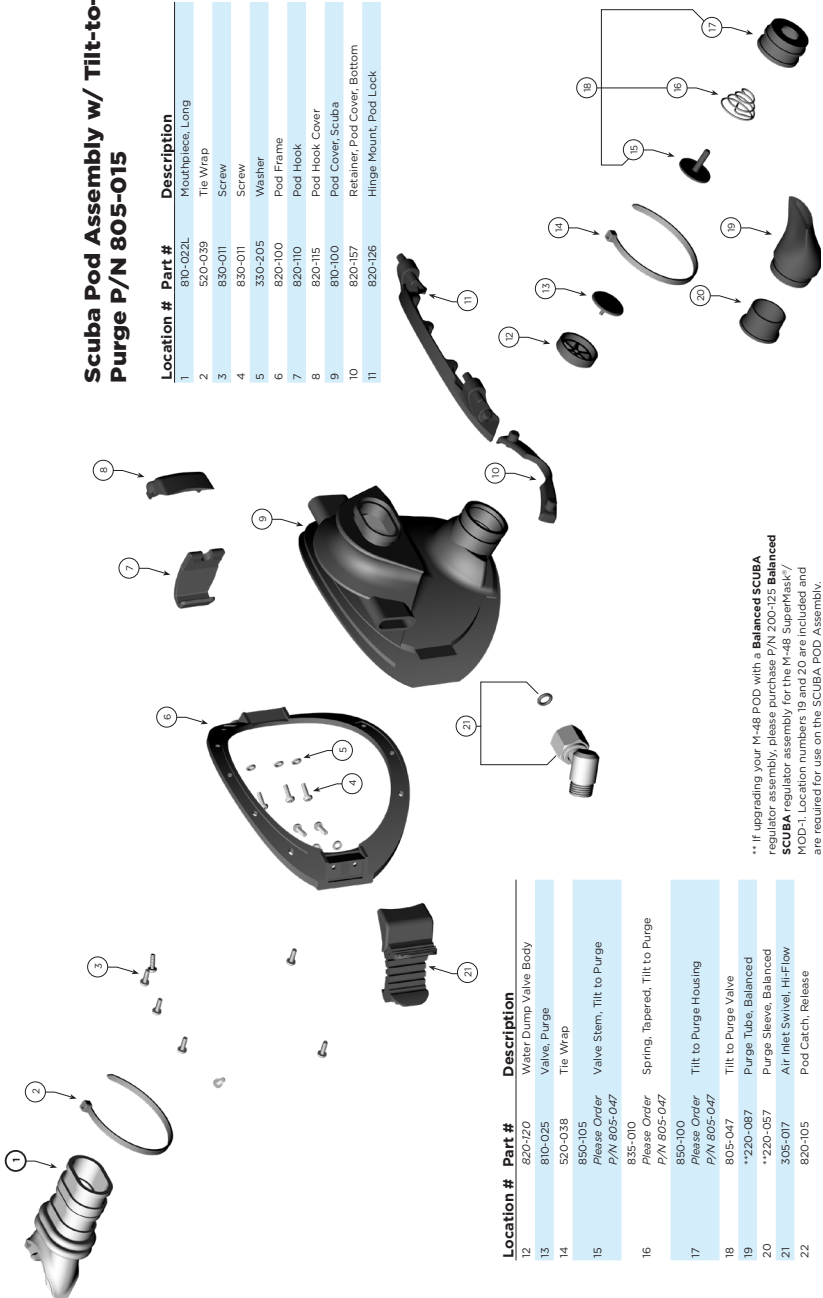
<b>Location #</b>	<b>Part #</b>	<b>Description</b>
1	805-031*	Harness, semi-stretch
2	820-225	Strap Keeper
3	810-005	Mask Skirt
4	820-050	Lens Retainer
5	805-028	Buckle Assembly, Non Mag
6	820-026	Buckle Tab Hold Plug
7	820-030	Buckle Cap
8	865-005*	Lens
	865-005C*	Lens, Clear
9	830-011	Screw
10	330-205	Washer
11	820-025	Lock Plug
12	820-227	Buckle Mount Plate, Left
13	805-153	Buckle Assembly, Non Mag, Left
14	820-233	Buckle Cap, Left
15	830-014	Screw
16	820-041	Jaw Frame Retainer
17	820-031	Buckle Cap Retainer
18	820-045	Pod Catch
19	820-036	Jaw Frame
20	820-226	Buckle Mount Plate, Right
21	805-152	Buckle Assembly, Non Mag, Right
22	820-232	Buckle Cap, Right
23	520-038	Tie Wrap
24	820-155	Comm port plug

**NOTE:** Although some components herein, are labeled, “Non-Mag”, That claim is based on tests performed at initial production startup of this mask, and NOT based on any ongoing testing. If this product is to be used where the equipment needs to have a low, or non magnetic signature, it is the responsibility of the end user to apply any specialized testing, to determine if the equipment will pass any needed, low or non magnetic requirements.

\* Denotes a critical component

# Exploded View Drawing of the SCUBA Pod, P/N 805-015

## Scuba Pod Assembly w/ Tilt-to-Purge P/N 805-015



Location #	Part #	Description
1	810-022L	Mouthpiece, Long
2	520-Q39	Tie Wrap
3	830-011	Screw
4	830-011	Screw
5	330-205	Washer
6	820-100	Pod Frame
7	820-110	Pod Hook
8	820-115	Pod Hook Cover
9	810-100	Pod Cover, Scuba
10	820-157	Retainer, Pod Cover, Bottom
11	820-126	Hinge Mount, Pod Lock

Location #	Part #	Description
12	820-120	Water Dump Valve Body
13	810-025	Valve, Purge
14	520-Q38	Tie Wrap
15	850-105	Valve Stem, Tilt to Purge
	Please Order P/N 805-047	
16	835-010	Spring, Tapered, Tilt to Purge
	Please Order P/N 805-047	
17	850-100	Tilt to Purge Housing
	Please Order P/N 805-047	
18	805-047	Tilt to Purge Valve
19	**220-087	Purge Tube, Balanced
20	**220-057	Purge Sleeve, Balanced
21	305-017	Air Inlet Swivel, Hi-Flow
22	820-105	Pod Catch, Release

\*\* If upgrading your M-48 POD with a **Balanced SCUBA** regulator assembly, please purchase P/N 200-125 **Balanced SCUBA** regulator assembly for the M-48 SuperMask / MOD-1. Location numbers 19 and 20 are included and are required for use on the SCUBA POD Assembly.

## **Records**

Balanced SCUBA Serial Number: \_\_\_\_\_

Date of Purchase: \_\_\_\_\_

KMDSI Dealer: \_\_\_\_\_

Dealer Phone Number: \_\_\_\_\_

Dealer Email: \_\_\_\_\_

## **Notes**

---

---

---

---

---

---

---

---

---

---

---

---

---

---

---

---

---

---

---

---

---

---

---

*This page intentionally left blank*



1430 Jason Way, Santa Maria, CA 93455  
Phone: 805/928-7772 Fax: 805/928-0342  
[www.kirbymorgan.com](http://www.kirbymorgan.com) E-mail: [kmdsi@kirbymorgan.com](mailto:kmdsi@kirbymorgan.com)