



Kirby Morgan Dive Systems, Inc.®

1430 Jason Way Santa Maria, California 93455

Phone: 805/928-7772 Fax: 805/928-0342

www.KirbyMorgan.com email: kmddsi@KirbyMorgan.com

Part #525-032 Whisker Clamp Replacement Kit

These clamps are a replacement for the tie wraps P/N 520-042 used on earlier KMDSI Tri/Quad valve assemblies P/N's 525-752, 525-755 & 525-759. When properly installed they provide the rigid support needed to properly retain all components.

Location #	Part #	Description	Qty
1	520-118	Clamp	2
2	530-008	Brass Screw	2
3	530-009	Brass Nut	2

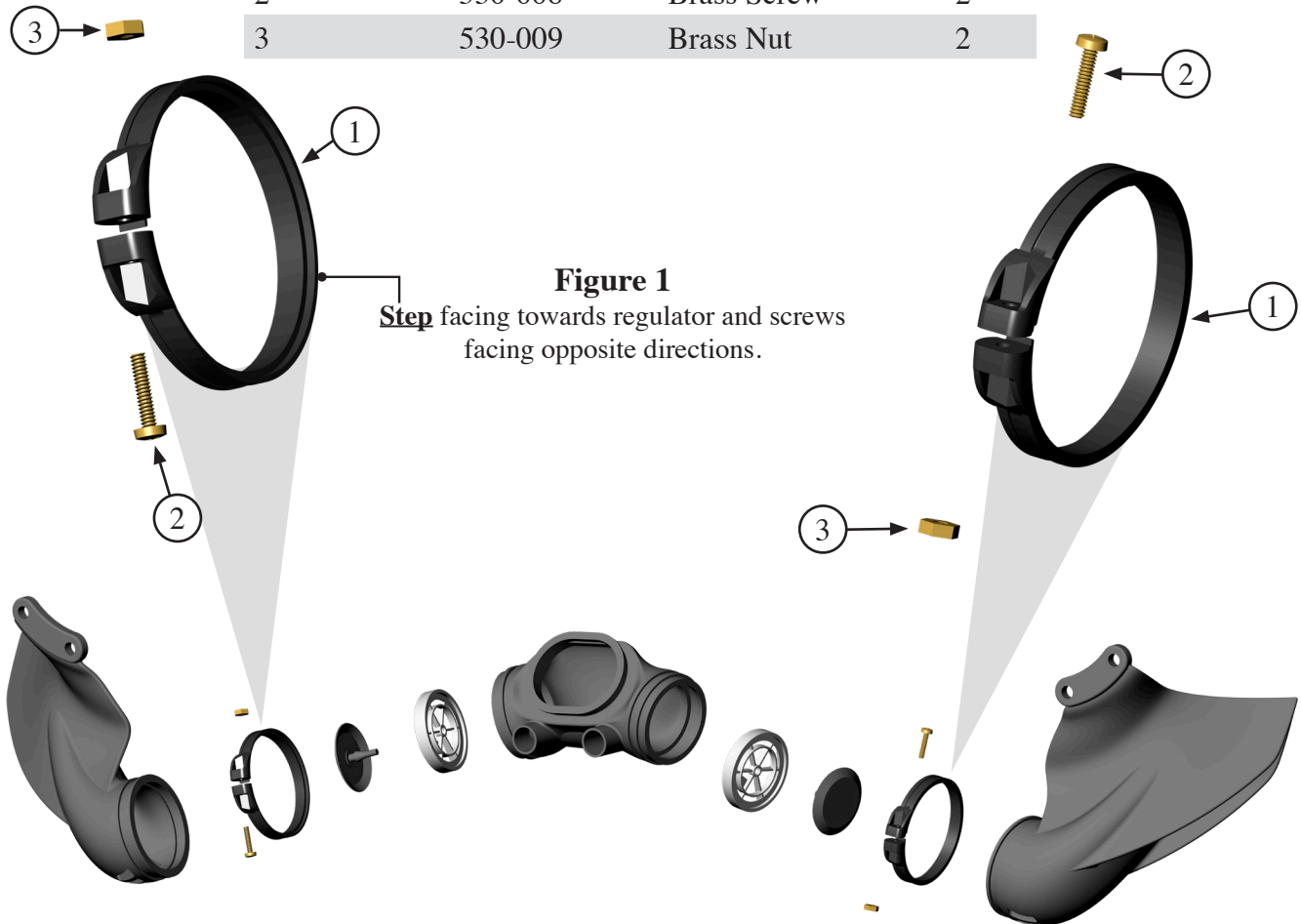


Figure 1

Step facing towards regulator and screws facing opposite directions.

Installation instructions on reverse

⚠ CAUTION

Use only KMDSI original replacement parts. The use of other manufacturers' parts will interfere with the performance characteristics of your life support equipment and may jeopardize your safety. Additionally, any substitutions will void any warranties offered by KMDSI. When ordering spares, always insist on Kirby Morgan Genuine Parts.

Kirby Morgan Dive Systems, Inc.®

1430 Jason Way Santa Maria, California 93455

Phone: 805/928-7772 Fax: 805/928-0342

www.KirbyMorgan.com email: kmdsi@KirbyMorgan.com



Important note:

These clamps must be installed in a particular direction. Notice one side of the clamp is flat and the opposite side has a step. When installing the clamp, make sure the stepped side faces towards the regulator (fig.1). You will not achieve a good install if they are not positioned properly.

Also, the holes for the screw to pass through are different sizes. Be sure to install the screw, first through the hole with clearance. The screw will then slightly thread into the plastic, making the assembly easier. Because the clamps are directional, this causes the screws to be installed in opposite directions to each other.

Tie Wrap Removal and Clamp Installation Instructions

- 1) Carefully remove both tie wraps from the tri valve port and starboard wings.
- 2) Pull whiskers away from the main body to allow inspection of the mating parts and clean and/or replace as needed.
- 3) Install the clamps onto each wing, making sure the step side on the clamp will face towards the regulator when finished. You should see where the step will capture the rubber on the end of the wing.
- 4) Properly re-align the port and starboard wings to the main body.
- 5) Position the screw/nut block on the clamp, and the wings, so it is easy to access and install the screw and nut. This should be towards the front of the assembly,
- 6) Insert the screws into the holes of the clamp that provide a slip through fit, then using a Phillips screwdriver, thread the screw into the plastic. Before the screw comes through the plastic, install the hex nut and finish tightening the screw. Tighten only enough to close the 2 ends of the clamp together.