



# Kirby Morgan Dive Systems, Inc.®

1430 Jason Way Santa Maria, California 93455

Phone: 805/928-7772 Fax: 805/928-0342

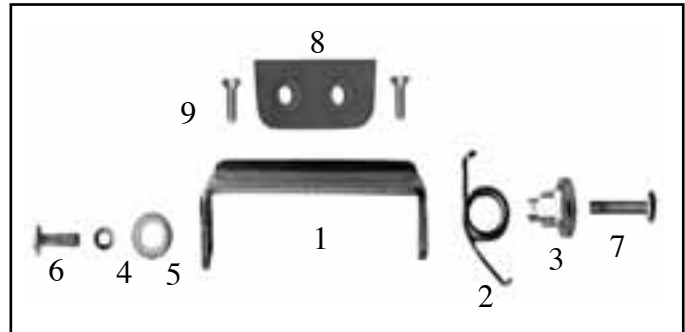
www.KirbyMorgan.com email: kmdsi@KirbyMorgan.com

## 525-135 SWING CATCH ASSEMBLY (RETROFIT KIT, SL-17 C)

### **PARTS NEEDED:**

1	545-077	Swing Catch with 520-167 Teflon Washer attached
2	535-827	Spring
3	550-122	Spring Spacer
4	550-061	Spacer
5	530-546	Washer
6	530-035	Screw
7	530-045	Screw
8	550-160	Tongue Spacer
9	530-016	Screw (2)

**TOOLS NEEDED:** Screw Driver  
Phillips Driver (small)  
Spring Spacer  
Bag Sealer  
Glue  
6x9 Bags



1. Remove original tongue catch from the helmet neck ring.
2. Check swing catch to P/N 545-077 assure that the Teflon washer is attached to the inside of the catch on the spring attachment end. Take care to not displace this washer.



3. Place swing catch in position on neck ring. Bent edge of catch should face in.



4. Use shorter P/N 530-035 of the two P/N 530-045 larger screws, metal washer P/N 530-546 and small spacer, and attach swing catch on the left side of the neck ring.



5. Hook spring P/N 535-827 into notch in swing catch and place in position on end of swing catch.

# Kirby Morgan Dive Systems, Inc.®

1430 Jason Way Santa Maria, California 93455

Phone: 805/928-7772 Fax: 805/928-0342

www.KirbyMorgan.com email: kmdsi@KirbyMorgan.com



6. Insert spring spacer P/N 550-122 and longer screw through spring, swing catch and Teflon spacer, and start screw into thread in the neck ring. Insure free operation of the swing catch before tightening screws.



7. Finish tightening screws. Swing catch should close freely and securely with spring pressure.



8. Place the neck ring bottom side up and align the small black Delrin tongue spacer on the neck ring tongue. Accurately mark the two holes in the spacer on the neck ring tongue.



9. Drill the two holes in the neck ring with a #36 drill and tap with a 6 - 32 tap. Clean off any burrs.



10. Attach the tongue spacer P/N 550-160 to the neck ring using the two screws P/N 530-016 provided.

Check completed assembly for proper functioning.

***Note: It is recommended that a drop of "Loctite 222" or other appropriate thread locking compound be used on all screws.***