



Kirby Morgan Dive Systems, Inc.®

1430 Jason Way Santa Maria, California 93455

Phone: 805/928-7772 Fax: 805/928-0342

www.KirbyMorgan.com email: kmdsi@KirbyMorgan.com

Part #525-752

Tri-Valve® Exhaust Kit

For SL 17 A/B, 17 K, KM 37 & KMB 18/28 Band Masks

| Loc. # | Part # | Description | Qty. |
|--------|---------|--------------------|------|
| 1 | 505-725 | Tri-Valve Assembly | 1 |
| 2 | 510-552 | Exhaust Valve | 1 |
| 3 | 520-042 | Tie-Wrap | 1 |

Tools Required:

Torque Screwdriver

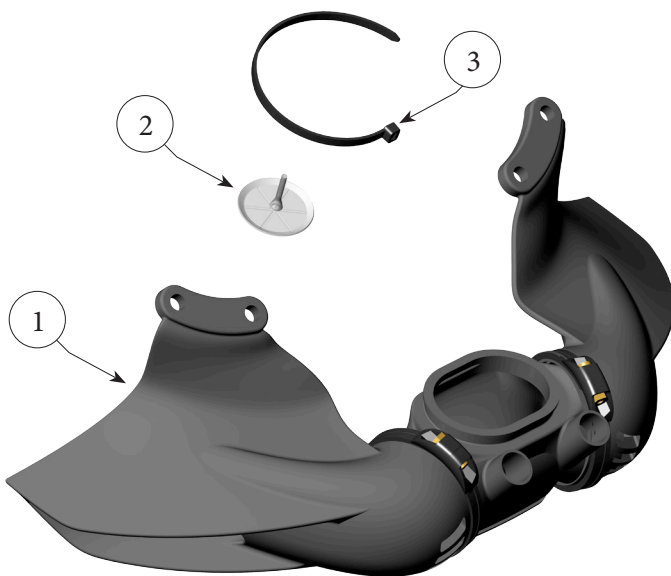
- #2 Phillips Screwdriver Attachment

Torque Wrench

- 1/16" Open End Attachment
- 13/16" Open End Attachment
- 7/8" Open End Attachment

- Small cutting pliers

- Needle nose pliers/ Cable Tie Tool
- 1 3/8" Socket with extension (min. 3")
- 7/8" Open end wrench
- Christo Lube® or equivalent



NOTE: This Tri-Valve® Exhaust System is not physically CE marked. This is done to avoid giving the impression that Pre-CE marked helmets / masks will be considered CE approved when fitted with this exhaust system. Use of this product on helmets / masks bearing a valid CE mark will NOT invalidate that certification mark. EC approval was conducted by SGS United Kingdom Ltd, Unit 202B Worle Parkway, Weston Super Mare BS22 6WA United Kingdom Notified Body 0120.

NOTE: Where country or company policy dictates, the Tri-Valve® kit should be installed by a qualified, certified Kirby Morgan technician only. Where policy does not dictate, individuals desiring to perform the installation should call or e-mail KMDSI if in doubt about proper installation exists.

NOTE: It is necessary to remove the regulator from the Helmet or Band Mask® in order to remove and replace the Tri-Valve® Exhaust System/Whisker and Exhaust Valve.

Removal

NOTE: To remove and install a new Tri-Valve Exhaust System properly the regulator will have to be removed from the helmet or Band Mask shell first. See "1.3.1 SuperFlow® 350 Demand Regulator Removal from Helmet or Mask" on page SF350-8 of the KMDSI modular manual.

- 1) Cut the tie wrap that holds the Tri-Valve Exhaust system to the regulator.

Kirby Morgan Dive Systems, Inc.®

1430 Jason Way Santa Maria, California 93455

Phone: 805/928-7772 Fax: 805/928-0342

www.KirbyMorgan.com email: kmdsi@KirbyMorgan.com



2) Stretch the exhaust main body over and off of the regulator exhaust flange.

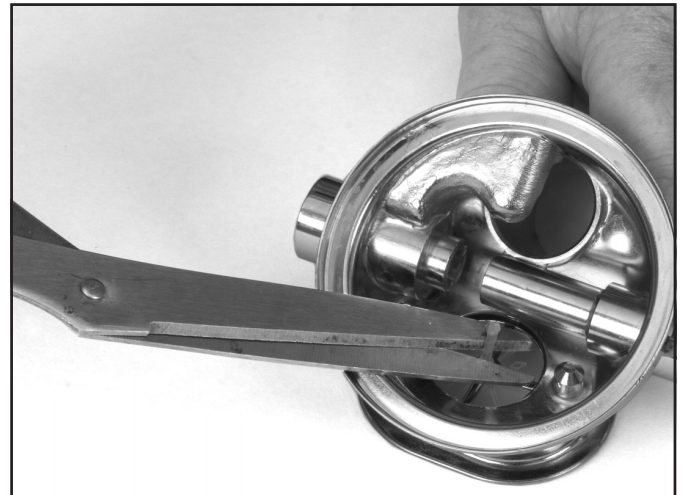
Regulator Exhaust Valve Removal and Replacement

1) Remove the existing regulator exhaust valve P/N 510-552 by pulling it out of its mount hole.

2) Remove the clamp screw, clamp, regulator cover and diaphragm from the regulator body.

NOTE: Before installing the new valve, ensure that the spokes that hold the exhaust valve are smooth, even and not bent. The exhaust valve seating area should be free of dirt and corrosion to ensure the valve can lay flat and seal properly. NEVER lubricate the valve.

3) Install the new regulator exhaust valve into the exhaust flange of the regulator and trim off any excess stem that may interfere with the movement of the lever or inlet valve.



4) Reinstall the diaphragm, cover, clamp and clamp screw onto the regulator body.

Installation

IMPORTANT NOTE: DO NOT ATTEMPT to stretch the whisker onto the regulator flange by pulling the long part of the whisker. Doing this could loosen or separate the parts. Grasp the main exhaust body area of the whisker, while stretching the rubber onto the exhaust flange. Make sure that the Tri-Valve Exhaust System is facing the correct direction and is not upside down.



Kirby Morgan Dive Systems, Inc.®

1430 Jason Way Santa Maria, California 93455

Phone: 805/928-7772 Fax: 805/928-0342

www.KirbyMorgan.com email: kmdsi@KirbyMorgan.com



1) Install the Tri-Valve Assembly P/N 505-725 to the regulator exhaust flange.



2) Place the tie wrap P/N 520-042 around the tie wrap seating surface on the exhaust assembly and tighten. Make sure that the tie wrap end is positioned as shown. Cut off the excess tie wrap tail.

3) Place the regulator into the helmet/mask opening

4) Attach the exhaust whiskers to the port retainer using the torque screwdriver to 12 inch lbs. (1.3 newton meters). **ALWAYS REFERENCE** Appendix Contents, Torque Specs starting on page APNDX-19 in the modular manual to confirm correct torque.

5) Install the bent tube assembly before tightening the regulator mount nut to its recommend torque. See "1.2.3 Installation of the Bent Tube Assembly" on page BNT-2.

6) Torque the regulator mount nut to 100 inch lbs. (11.3 newton meters). **ALWAYS REFERENCE** Appendix Contents, Torque Specs starting on page APNDX-19 in the modular manual to confirm correct torque.

