



Kirby Morgan Dive Systems, Inc.®

1430 Jason Way Santa Maria, California 93455

Phone: 805/928-7772 Fax: 805/928-0342

www.KirbyMorgan.com email: kmdsi@KirbyMorgan.com

Part # 825-040

Metal/Plastic Buckle Assembly Kit

Parts Needed (In Order Of Assembly):

Part #	Description	Qty
805-028	Buckle Assembly, Non Mag	2
820-026	Buckle Tab Hold Plug	2
820-030	Buckle Cap	2
820-031	Buckle Cap Retainer	2
820-025	Lock Plug	2
820-225	Strap Keeper	2

Points Of Importance:

P/N 820-026, Buckle Tab Hold Plug:

Note the four small engagement arms and hooks. When inserting into the mask, make sure that all four go evenly into the mounting hole. If not done carefully, it is possible for one or more of the legs to slip out of the hole when inserting, possibly damaging the part. See *Figure 1*.

The underside of this part also has two small spacing stand-offs. These should be aligned with the sides of the buckle mount tab and **NOT** the rounded end of the tab when installing. Once this plug is properly installed, the stand-offs can be aligned anywhere. See *Figure 1* and *Figure 2*.

Procedures:

1. Place P/N 805-028, Buckle Assembly, Non Mag onto the mask jaw frame as shown, making sure the release tab of the buckle is pointing **AWAY** from the center of the mask. See *Figure 2*.
2. Insert P/N 820-026, Buckle Tab Hold Plug, as shown. Keep in mind the important point previously mentioned. When properly installed, the hooks should look as shown in *Figure 3*.
3. On P/N 820-030 Buckle Cap, insert the two legs with hooks into the mask frame, at a slight angle so the small alignment pin at the front of the cap will fit into its mating hole. Now press forward and down,

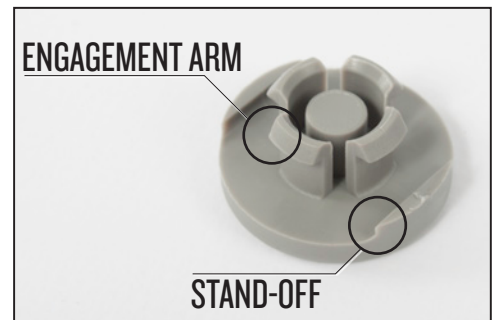


Figure 1



Figure 2



Figure 3

Kirby Morgan Dive Systems, Inc.®

1430 Jason Way Santa Maria, California 93455

Phone: 805/928-7772 Fax: 805/928-0342

www.KirbyMorgan.com email: kmdsi@KirbyMorgan.com



until the buckle cap snaps into place on the mask and jaw frame. The cap assembly should fit as shown. *See Figure 4.*

4. On the back side of the mask jaw frame, you will see where the buckle cap attachment hooks fit with the frame. P/N 820-031, Buckle Cap Retainer, has two small tabs that fit against the hooks and fill in the space there. This prevents the buckle cap from coming free. *See Figure 5.*
5. Press P/N 820-025 Lock Plug in between the four hooks. This prevents the hooks from flexing and causing the entire assembly from coming away from the mask. If the buckle is rotated by hand, the lock plug should follow the same movement. *See Figure 6.*
6. Install P/N 820-225 Strap Keeper as shown in *figure 7* below. Take note that the flat edge is facing inward and the open ends are facing outward.



Figure 4



Figure 5



Figure 6

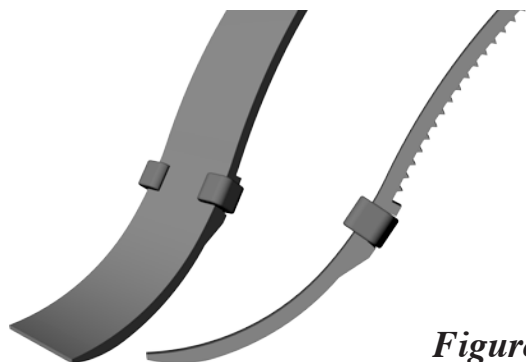
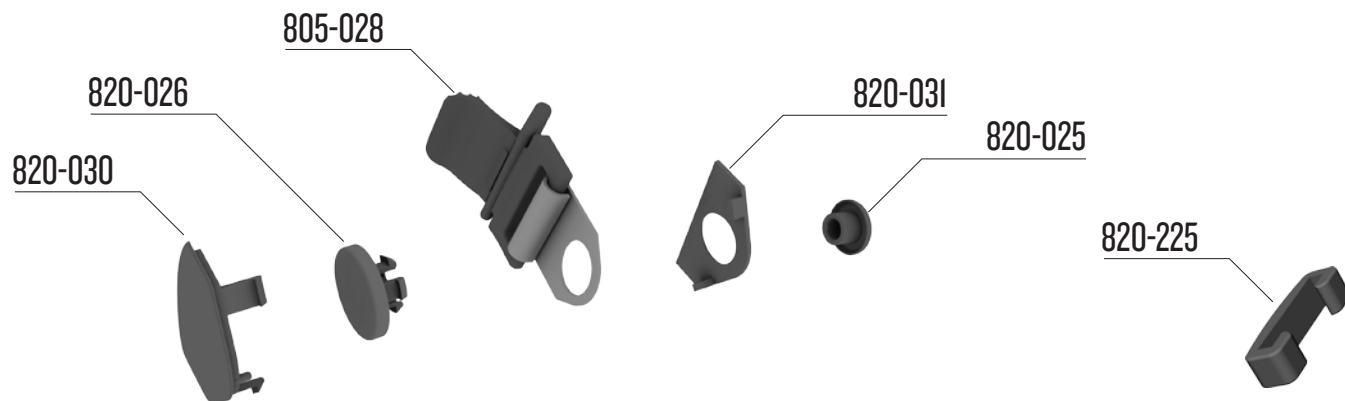


Figure 7

NOTE: Be certain to check fit of all the components on a regular basis, at the beginning of every dive and also after final cleanup. If these parts become loose, this may allow the buckle assembly to separate from the mask.



Exploded View, Buckle Assembly (P/N 805-028) and Attachment Parts

