



# Kirby Morgan Dive Systems, Inc.®

1430 Jason Way Santa Maria, California 93455

Phone: 805/928-7772 Fax: 805/928-0342

www.KirbyMorgan.com email: kmdsi@KirbyMorgan.com

## Part# 525-759

### Quad Valve Exhaust Kit Water Dump Adapter Cover Installation

For all SuperLite 17-A/B/K, KM-37 & KM-57

**NOTE: NOT recommended for use on any KMDSI band mask. There is insufficient clearance between the Main Cover (5) and Mask Bands. This could cause bands to become dislodged.**

#### Tools Needed:

Medium flat blade screwdriver

1 3/8" (lg. tube regulator) or 1 1/4" (sm. Tube regulator)

1 1/16"-13/16"- 7/8"- open end torque wrench adapters

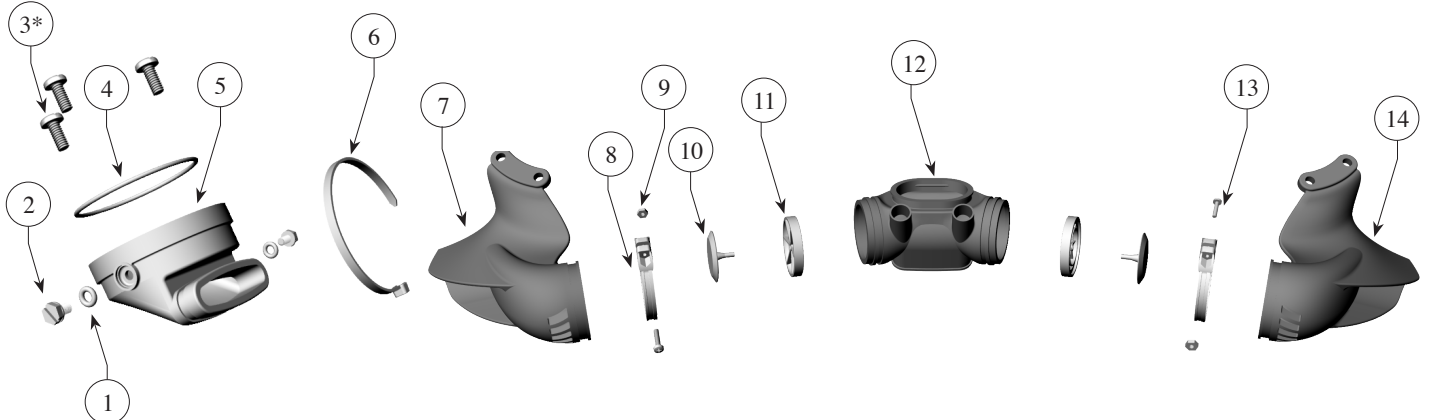
#1 Phillips head screwdriver

Inch Pound torque screwdriver w/medium flat blade

Socket /torquwrench,

7/8" open end wrench

Loc. #	Part Number	Description	Qty	Loc. #	Part Number	Description	Qty
1	530-019	Screw	2	9	530-009	Brass Nut	2
2	510-007	O-ring	2	10	510-776	Exhaust Valve	2
3*	530-032	Screw	3	11	520-200	Valve Seat	2
4	510-033	O-ring	1	12	510-760	Quad-Valve Exhaust, Main Body	1
5	560-530	Water Dump Adapter Cover	1	13	530-008	Brass Screw	2
6	520-042	Tie-Wrap	2	14	510-787	Port Whisker	1
7	510-786	Starboard Whisker	1	not shown	510-552	Exhaust Valve	1
8	520-118	Clamp	2				



**NOTE:** This Quad-Valve Exhaust System is not physically CE marked. This is done to avoid giving the impression that Pre-CE marked helmets /masks will be considered CE approved when fitted with this exhaust system. Use of this product on helmets/masks bearing a valid CE mark will NOT invalidate that certification mark. EC approval was conducted by SGS United Kingdom Ltd, Unit 202B Worle Parkway, Weston Super Mare BS22 6WA United Kingdom Notified Body 0120.

**\*NOTE:** Due to variations in fiberglass thickness, it may be necessary to remove and replace these 3 mount screws for the main exhaust body. This is indicated by inspecting the ends of the original screws. By removing the original main exhaust cover, look to see if the screws protrude through the main exhaust body. If they do, they may cause interference with the new S.S. Quad cover. Replace them with the 3 new screws.

**NOTE:** Where country or company policy dictates, the Tri-Valve kit should be installed by a qualified, certified Kirby Morgan technician only. Where policy does not dictate, individuals desiring to perform the installation should call or E-mail KMDSI if doubt about proper installation exists.

**NOTE:** It is necessary to completely remove the demand regulator as well as bent tube or "A" style hose connection to the side block to allow proper installation of this assembly.

#### Instructions:

1) Remove the bent tube (or "A" style hose) from the regulator and side block completely.

2) Remove the 4 screws, 2 kidney plates and 4 spacers (or zinc whisker anodes)

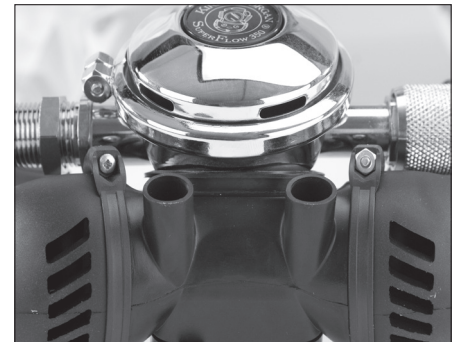


Figure 1



# Kirby Morgan Dive Systems, Inc.®

1430 Jason Way Santa Maria, California 93455

Phone: 805/928-7772 Fax: 805/928-0342

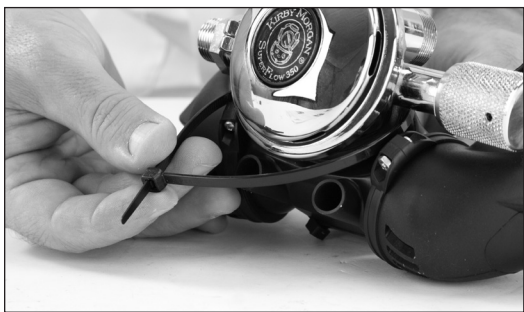
www.KirbyMorgan.com email: kmdsi@KirbyMorgan.com



that retain the whisker to the port retainer. Safeguard all of these parts.

3) Remove the demand regulator from the helmet. Save O-ring or if damaged, replace.

4) Remove the old exhaust assembly from the demand regulator.



**Figure 2**

Make sure no sharp edges remain. (Fig. 2)

8) Remove the main exhaust/water dump cover and inspect both the exterior outer surface of the valve body as well as the valve itself. The new cover will require a seal to the outer surface of this exhaust body. This surface must be free of any damage to allow getting a proper seal. Replace the body if damage is found.

9) Begin to re-install the demand regulator into the mounting hole, but insert only about halfway in. This will allow the Stainless Steel adapter cover to align easier with the water dump body. Start the cover straight onto the water dump body, (Fig. 3), then alternate back to inserting the regulator. Do this until both are in their proper positions. Lubricate the regulator seal o-ring and hand start the regulator mount nut.

10) Lubricate and install the 2 O-rings P/N 510-007 and install onto the washer head screws. Using either a flat blade screwdriver or a ¼" nut driver, fully engage the screws. Tighten until snug. (Fig. 4) TIP: the ¼" hex tool found in the Kirby Morgan regulator tool kit works very well for this purpose.

11) Reinstall the bent tube assembly and tighten the side block fitting to 100 inch pounds and the regulator fitting to 40 inch pounds, or reinstall the "A" style hose if the unit has an "A" side block.

12) Retighten the regulator mount nut to 100 inch pounds.

13) Reinstall the 4 spacers kidney plates (or zinc anodes) and screws and torque to 12 inch pounds.

5) Inspect the demand regulator exhaust valve for damage. Clean the seat and replace the valve as may be necessary with the valve P/N 510-552 included with this kit.

6) Install the Quad valve whisker assembly making sure all parts are properly aligned.( Fig. 1)

Note: Do not pull on either of the whiskers to stretch fit the assembly onto the regulator. Doing so may loosen or dislodge the whiskers from their proper position. Carefully pull onto the reg and position as shown. (Fig. 1)

7) Install new tie-wrap P/N 520-042 as shown and trim excess strap.



**Note:** parallel dashed lines to guide the perfectly parallel alignment of the part to the Helmet.

**Figure 3**



**Figure 4**

