



Kirby Morgan Dive Systems, Inc.®

1430 Jason Way, Santa Maria, California 93455

Phone: 805/928-7772 Fax: 805/928-0342

www.kirbymorgan.com e-mail: kmdsi@kirbymorgan.com

Bulletin #4 of 2017. December 13, 2017

Discontinuation of Product Bulletin "A" Regulator Assemblies and "A" Regulator Assembly Kits

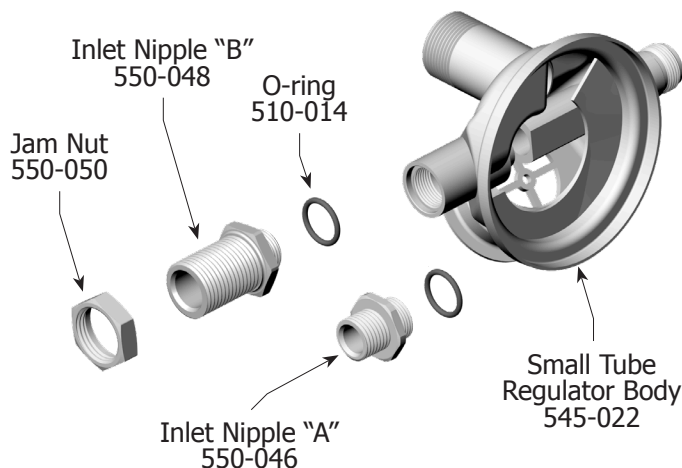
Products Affected:

SuperLite® 17A Helmets

KMB 18A BandMasks®

505-026 "A" Regulator Assembly

525-777 "A" Regulator Assembly Kit



Effective now, Kirby Morgan has discontinued production of the "A" Regulator Assembly P/N 505-026, and the "A" Regulator Assembly Kit P/N 525-777.

The decision to discontinue the "A" Regulator was made due to very low demand. Also related, no "A" configuration Helmets or Band Masks® have been produced for thirteen years, since the discontinuation of the "A" side block in 2005.

ALL parts for the "A" Regulators remain available.

The current SuperFlow® "B" Regulator, P/N 505-027, shares all parts in common with the "A" Regulator, with the exception of the inlet nipple. The SuperFlow® "B" Regulator is still used today in the production of the SuperLite® 17B Helmets. All it takes to make a "B" regulator into an "A" is to change the inlet nipple (see below).

The difference between the current SuperFlow® "B" regulator and the discontinued "A" version:

The Superflow® "A" regulator has an inlet nipple "A", P/N 550-046.

The current Superflow® "B" has an inlet nipple "B", P/N 550-048, and requires the jam nut, P/N 550-050.

With an "A" inlet nipple installed, the "B" regulator assembly becomes an "A" regulator assembly.

NOTE: The O-ring P/N 510-014 is required with both inlet nipples.

Please contact your KMDSI dealer or e-mail sales@kirbymorgan.com for more information.

