



Kirby Morgan Dive Systems, Inc.®

1430 Jason Way, Santa Maria, California 93455

Phone: 805/928-7772 Fax: 805/928-0342

www.kirbymorgan.com e-mail: info@kirbymorgan.com

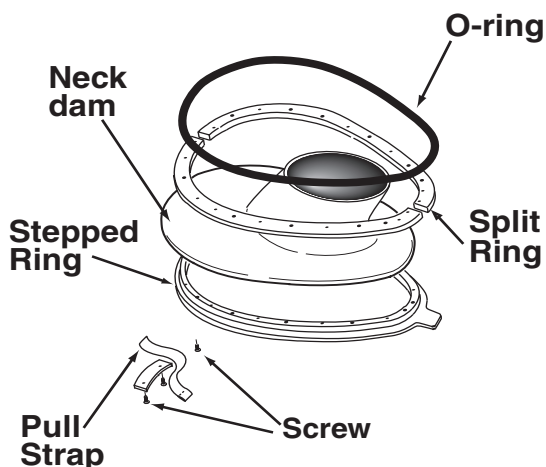
Product Bulletin - #16 of 2005 New Stepped Neck Dam Ring Part# 560-078 and Split Ring Part #540-105 for Kirby Morgan Helmets November 29, 2005

Effective now, Kirby Morgan helmets (with the exception of the SuperLite-17B) will ship with a re-designed stepped neck dam ring (Part#560-078) and a new split ring (Part #540-105). These new rings have slightly different dimensions than the previous models but will back-fit all previous models of helmets that use this design, including models 17K, 27, 37, and 57. It will also fit new helmets that are yet to be released, models 47, 67, and 77.

In the Kirby Morgan tradition of always making a part tougher than it needs to be, we have increased the strength and security of these parts without changing their fit. This means there is less chance to strip the threads when you're installing a new neck dam, the parts are more resistant to bending, and the neck dam is gripped more securely.

These new designs will also affect the separate neck dam/ring assemblies such as the 505-100, 505-119, and all variations made with special size or latex neck dams.

Because the original chin strap design does not work with this new style neck ring, a new chin strap with installation instructions will be included with all stepped neck dam rings (560-078) and with all neck dam ring assemblies.



A separate bulletin will be issued in regards to how these changes affect the SuperLite 17C helmet.

